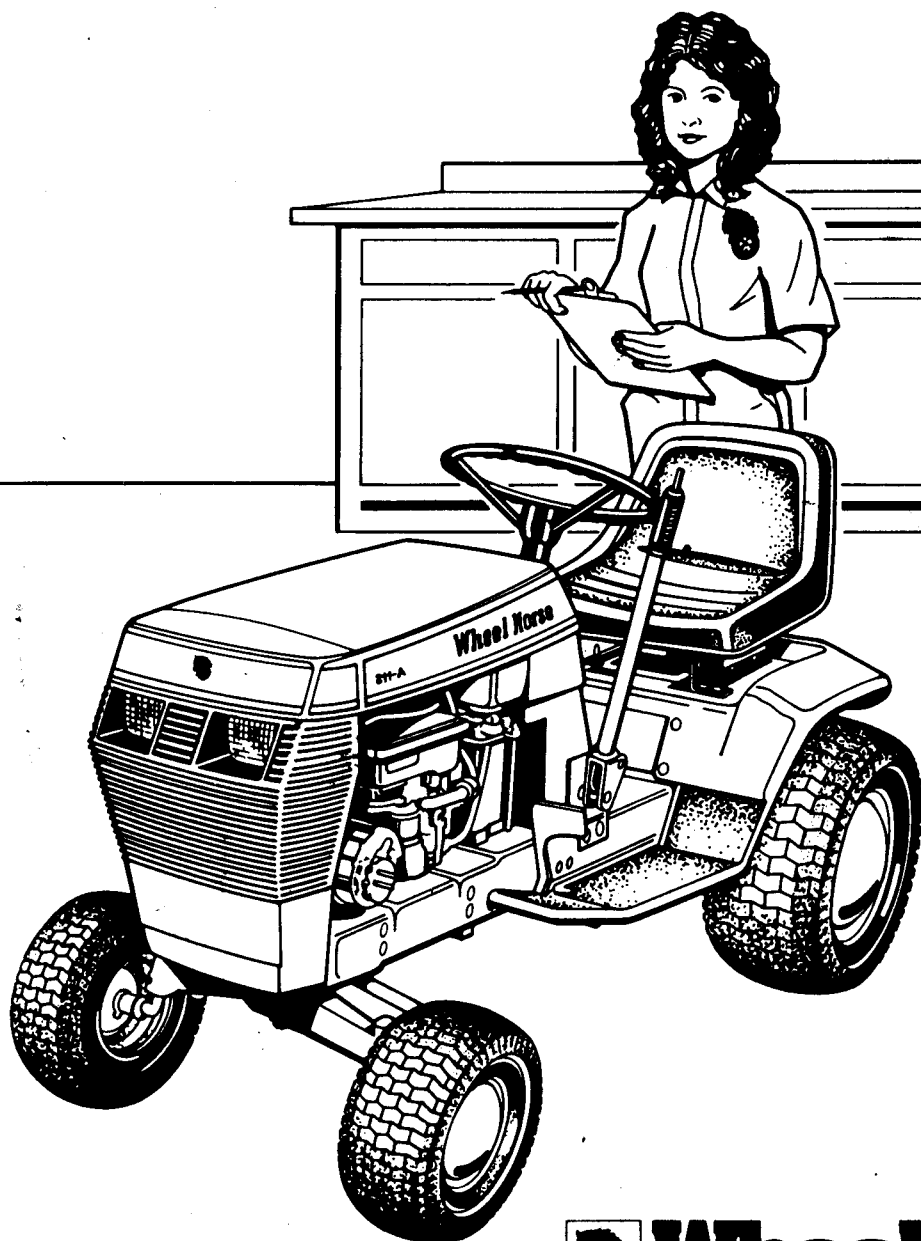


Parts & Service Manual

22-08B301	208-3	3 SPEED
22-11B301	211-3	3 SPEED
22-11B501	211-5	5 SPEED
22-16B501	216-5	5 SPEED
22-11BE01	211-A	AUTOMATIC



Wheel Horse

WHEEL HORSE 200-SERIES
PARTS MANUAL

INTRODUCTION PAGE

1. How to use this parts manual

- 1.1 The 200-Series parts manual is divided into major sections arranged in the sequence as outlined on the following page. Major sections are subdivided into smaller groups of parts, each with its own illustration and illustration reference numbers.
- 1.2 Illustrated items are numerically keyed to the parts listing on the facing page. Illustrations are repeated when the parts list is too long for one page. Figure numbers are located at the bottom of each illustration and also at the beginning of each description column. Item numbers are numerically keyed to their respective illustrations.
- 1.3 A numerical index is located at the end of the manual.
- 1.4 When an (X) appears in the quantity (Qty) column use only if applicable or as required to meet tolerances.

2. To locate parts

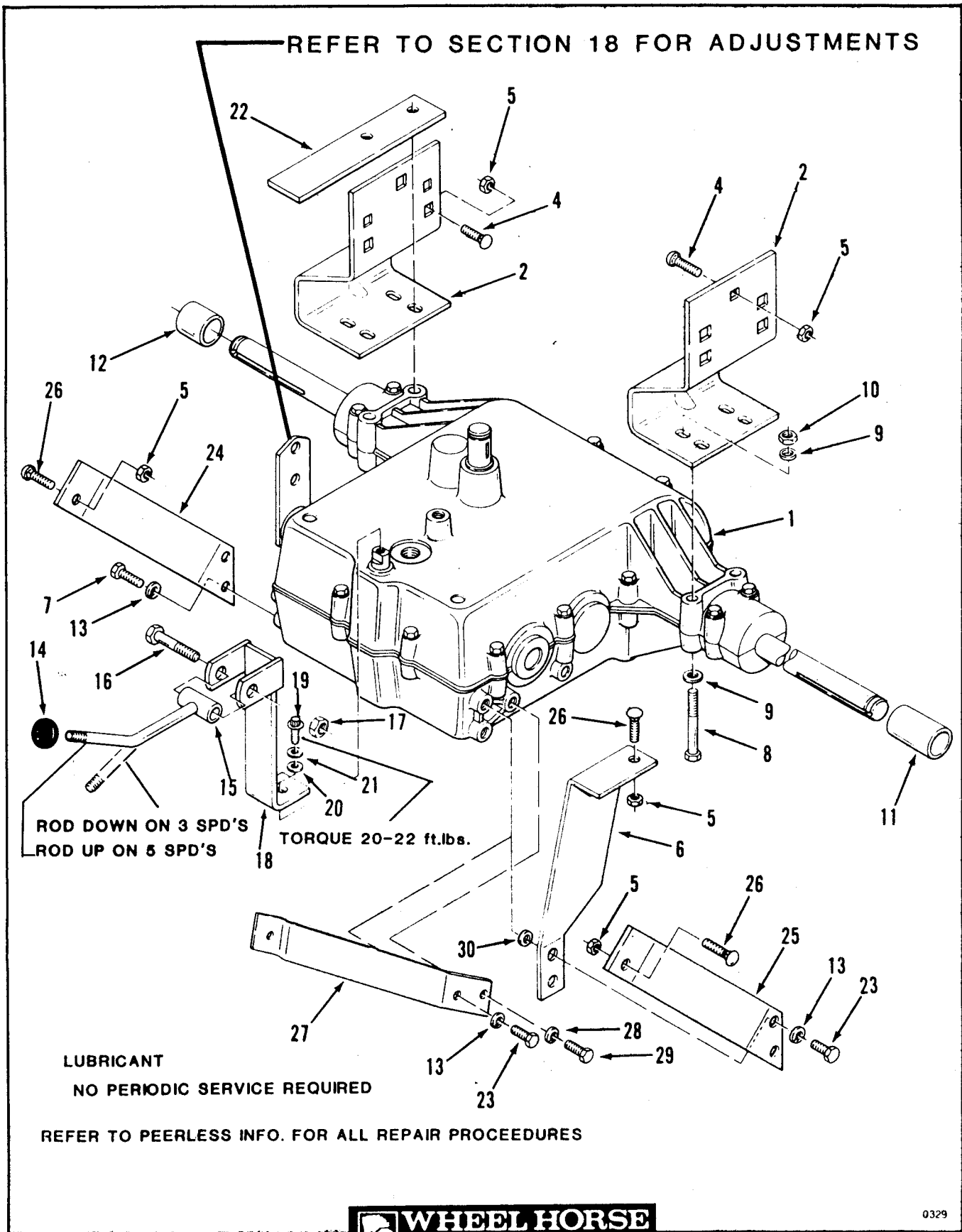
- 2.1 When function use or location is known:
Refer to the List of Illustrations to locate the proper illustration.
- 2.2 When part number is known:
Refer to the Numerical Index.

3. Service information

- 3.1 Special notes recorded on illustrations:
Refer to available owner & repair manuals and service bulletins for detailed information.
- 3.2 Standard torque values for fasteners:
Refer to Section 18 - Torque Specifications.
- 3.3 Paint:
Refer to Section 18 - Paint.

LIST OF ILLUSTRATIONS 1

TITLE	FIGURE NUMBER	PAGE
Section 3		
3 & 5 Speed Transmission.....	3-1	2
Section 4		
Transaxle.....	4-1	4
Automatic Transmission.....	4-2	6
Section 5		
Front Axle and Steering (Mower Hanger).....	5-1	8
Section 6		
Brake and Clutch Linkage 3 & 5 Speed Models.....	6-1	10
Brake, Clutch and Motion Control Linkage.....	6-2,3	12-14
Section 7		
Attachment Lift.....	7-1	16
Section 8		
Frame, Sheet Metal and Covers.....	8-1	18
Frame, Sheet Metal and Covers.....	8-2	20
Section 9		
Engine.....	9-1	22
Section 10		
Fuel and Exhaust Systems.....	10-1	24
Section 11		
Electrical System.....	11-1	26-28
Section 13		
Wheels and tires.....	13-1	30
Section 14		
Drive Belt and Pulleys 3 & 5 Speed Models.....	14-1	32
Drive Belt and Pulleys Automatic Model.....	14-2	34
PTO Clutch.....	14-3	36
Section 15		
Seat and Suspension.....	15-1	38
Decals, Miscellaneous.....	15-2	40
Section 17		
Wiring Diagram	17-1	42
Wiring Diagram	17-2	43
Section 18		
Service Information.....	None	44



3 & 5-Speed Transmission

ITEM	PART NUMBER	DESCRIPTION	200-Series
		Figure 3-1 3 & 5-SPEED TRANSMISSION	
1	111047*	Trans.- 3-Spd.(Peerless Model 900-013).....	1
	110796*	Trans.- 5-Spd.(Peerless Model 833) 211-5 Only EARLY PRODUCTION	1
	111048*	Trans.- 5-Spd.(Peerless Model 801-028) 211-5 Only LATE PRODUCTION	1
	111049*	Trans.- 5-Spd.(Peerless Model 801-026) 216-5 Only	1
2	107970	Rear Axle Bracket RH 208-3, 211-3, 211-5.....	1
	110295	Rear Axle Bracket LH 208-3, 211-3.....	1
	108984	Rear Axle Bracket LH 211-5.....	1
	108793	Rear Axle Brackets 216-5.....	2
4	900037	Carriage Bolt 5/16-18 x 3/4.....	6
5	915112	Eslok Nut 5/16-18.....	9
6	110927	Torque Strap 208-3, 211-3, 211-5.....	1
	108792	Torque Strap 216-5.....	1
7	926720	S.T. Bolt 5/16-18 x 3/4 - (1) Used On 3-Speed....	2
8	908025	Hex HD Bolt 5/16-18 x 2 1/2.....	4
9	920008	Washer 5/16 SAE.....	8
10	915112	Eslok Nut 5/16-18	4
11	110201	Axle Spacer LH 208-3, 211-3 Only.....	1
	108421	Axle Spacer LH 211-5, 216-5 Only.....	1
12	108420	Axle Spacer RH 211-5, 216-5 Only.....	1
13	920082	Lockwasher 5/16 - (2) Used On 3-Speed.....	4
14	108758	Knob.....	1
15	110640	Shift Rod.....	1
16	908038	Bolt 3/8-16 x 2	1
17	915113	Eslok Nut 3/8-16.....	1
18	110192	Shift Lever - Lower 208-3, 211-3 Only.....	1
	109492	Shift Lever - Lower 211-5, 216-5 Only.....	1
19	111051	Bolt 1/4-28 x 7/8 - 12 Point Head.....	1
20	104869	Special Washer.....	1
21	111050	Special Counter Sunk Washer 1/4	1
22	110163	Brake Stop Bar 208-3, 211-3 Only.....	1
	108396	Brake Stop Bar 211-5, 216-5 Only.....	1
23	926697	Swage Form Bolt 5/16-18 x 1 - (1) Used On 3-Speed	2
24	110190	Torque Strap RH 208-3, 211-3 Only.....	1
	110798	Torque Strap RH 211-5 Only.....	1
	110152	Torque Strap RH 216-5 Only.....	1
25	110797	Torque Strap LH 211-5 Only.....	1
	110151	Torque Strap LH 216-5 Only.....	1
26	900037	Carriage Bolt 5/16-18 x 3/4.....	3
27	110296	Torque Strap LH 208-3, 211-3 Only.....	1
28	920081	Lockwasher 1/4 208-3, 211-3 Only.....	1
29	926673	S.T. Swage Screw 1/4-20 x 3/4 208-3, 211-3 Only..	1
30	920007	SAE Washer 1/4 208-3, 211-3 Only.....	1

*Order Replacement Parts or Complete Assembly
Through Manufacturer's Distribution System,
Using Model/Spec. Number Shown.
WHEEL HORSE Part Number Is Listed For Cross-
Reference Purposes Only; Item Is Not Available
Through WHEEL HORSE.

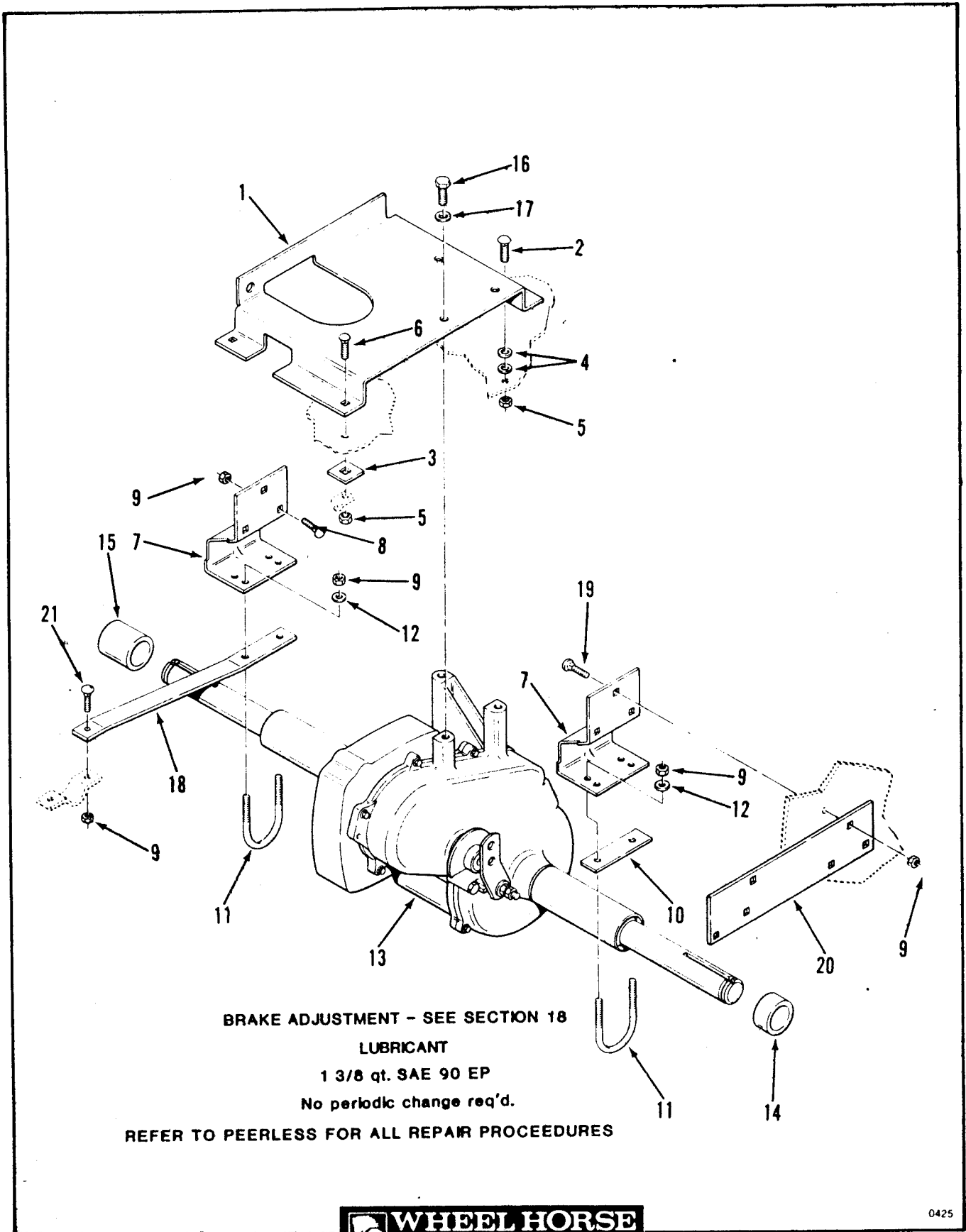


Figure 4-1 Transaxle

ITEM	PART NUMBER	DESCRIPTION	200-Series
		Figure 4-1 TRANSAXLE	
1	109402	Differential Support.....	1
2	900038	Carriage Bolt 5/16-18 x 1.....	2
3	106874	Pad.....	2
4	920008	Washer 5/16 SAE.....	4
5	915112	Eslok Nut 5/16-18.....	4
6	900038	Carriage Bolt 5/16-18 x 1.....	2
7	109388	Rear Axle Bracket.....	2
8	900037	Carriage Bolt 5/16-18 x 3/4.....	6
9	915112	Eslok Nut 5/16-18.....	14
10	107558	Spacer.....	1
11	109381	U-Bolt.....	2
12	920008	Washer 5/16 SAE.....	4
13	109390*	Transaxle - Peerless Model 1320.....	1
14	109393	Axle Spacer LH.....	1
15	109394	Axle Spacer RH.....	1
16	908034	Bolt 3/8-16 x 1.....	3
17	920083	Lockwasher 3/8.....	3
18	110187	Frame Brace RH.....	1
19	900037	Carriage Bolt 5/16-18 x 3/4.....	3
20	110188	Frame Brace LH.....	1
21	900038	Carriage Bolt 5/16-18 x 1.....	1

*Order Replacement Parts or Complete Assembly Through Manufacturer's Distribution System, Using Model/Spec. Number Shown.

WHEEL HORSE Part Number is Listed For Cross-Reference Purposes Only; Item Is Not Available Through WHEEL HORSE.

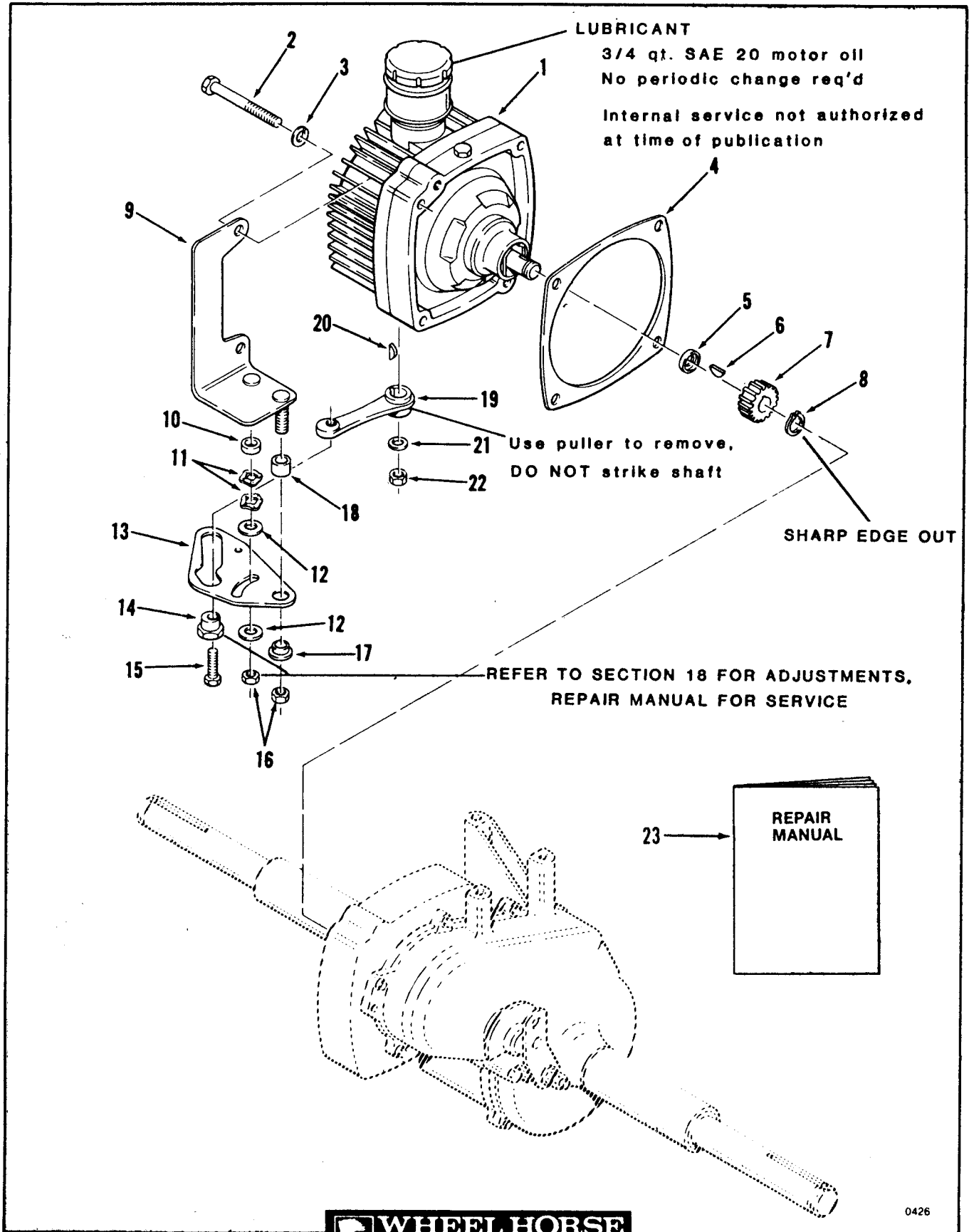


Figure 4-2 Automatic Transmission

SECTION 4 - AUTOMATIC TRANSMISSION

7 .

ITEM	PART NUMBER	DESCRIPTION	200-Series
		Figure 4-2	
		AUTOMATIC TRANSMISSION	
1	109352	Pump & Motor (219019 - Rebuilt).....	1
2	908042	Bolt 3/8-16 x 3.....	4
3	920083	Lockwasher 3/8.....	4
4	7951	Gasket.....	1
5	109447	Spacer.....	1
6	937082	Woodruff Key 1/8 x 1/2.....	1
7	109446	Gear 12 Tooth.....	1
8	936122	Snap Ring.....	1
9	109384	Control Plate.....	1
10	108327	Spacer (Short).....	1
11	100365	Washer - Spring.....	2
12	100305	Washer - Friction.....	2
13	108333	Cam - Speed Control.....	1
14	106661	Eccentric Cam.....	1
15	908019	Eslok Bolt 5/16-18 x 1.....	1
16	108881	Lock Nut 3/8-16 Hi-Tensile.....	2
17	100309	Spacer.....	1
18	108326	Spacer (Long).....	1
19	109383	Cam Follower Arm.....	1
20	937082	Woodruff Key 1/8 x 1/2.....	1
21	920009	Washer 3/8 SAE.....	1
22	915113	Eslok Nut 3/8-16.....	1
23	810283R1	Automatic Transmission Repair Manual.....	1

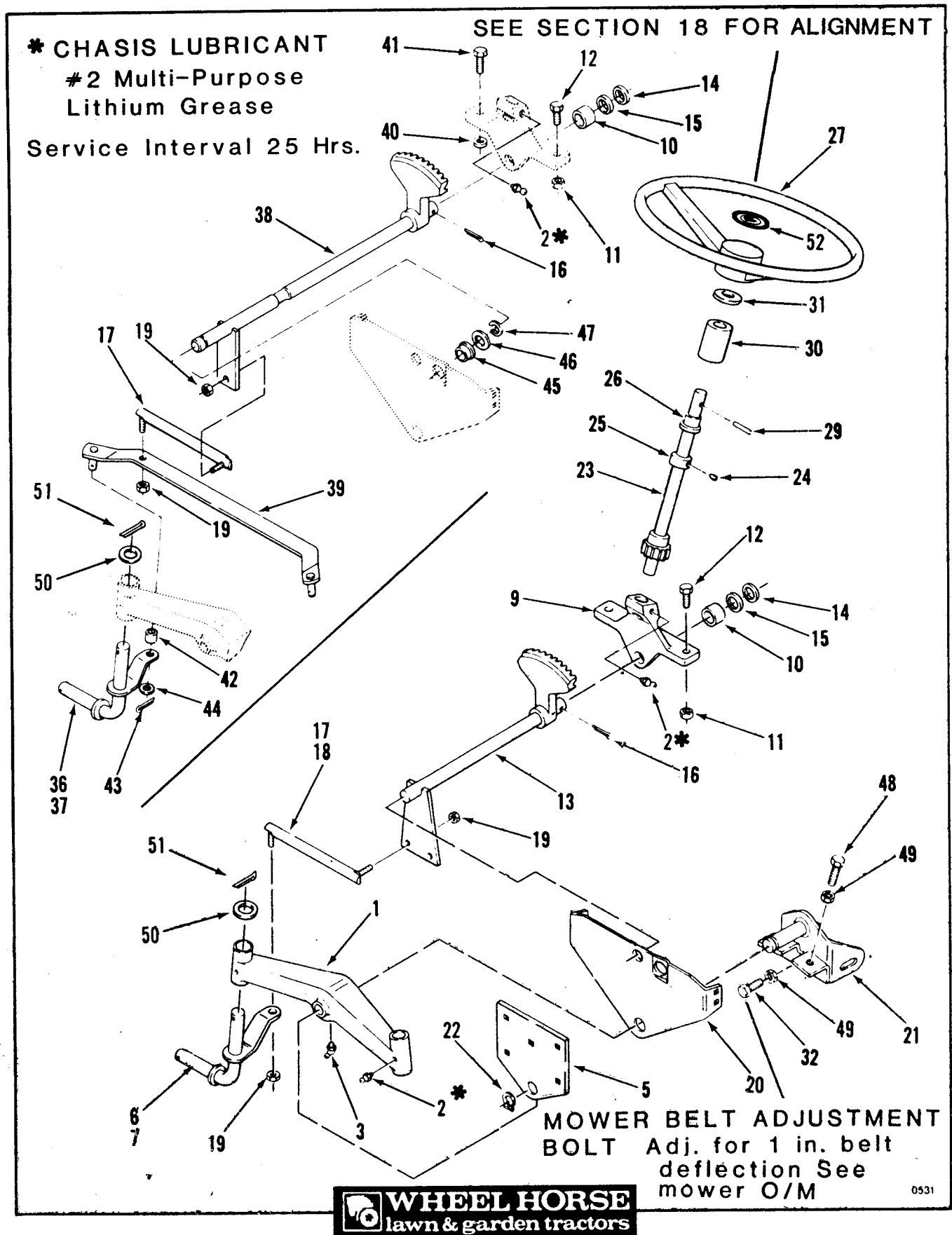


Figure 5-1 Front Axle and Steering (Mower Hanger)

SECTION 5 - FRONT AXLE AND STEERING

9

ITEM	PART NUMBER	DESCRIPTION	200-Series
		Figure 5-1 FRONT AXLE AND STEERING (MOWER HANGER)	
1	106199	Axle - Front.....	1
2	1030	Grease Fitting.....	3
3	1481	Grease Fitting.....	1
5	108910	Plate - Front Axle.....	1
6	111112	Front Spindle Assy RH 208-3, 211-3, 211-5, 211-A.	1
7	111113	Front Spindle Assy LH 208-3, 211-3, 211-5, 211-A.	1
9	109733	Support.....	1
10	6397	Bushing.....	1
11	915113	Eslok Nut 3/8-16.....	2
12	908034	Bolt 3/8-16 x 1..(1) used on 216-5.....	2
13	106310	Lower Steering Shaft Assy 208-3,211-3,211-5,211-A	1
14	5210	Shim Washer .015.....	X
15	1278	Shim Washer .050.....	X
16	932035	Cotter Pin 3/16 x 1 1/4.....	1
17	1772	Ball Joint Assy LH (RH on 216-5).....	1
18	1773	Ball Joint Assy RH 208-3, 211-3, 211-5, 211-A....	1
19	915002	Eslok Nut 3/8-24.....	4
20	108909	Support - Front Axle.....	1
21	109252	Front Hanger (Mower).....	1
22	104822	Retaining Ring 3/4.....	1
23	104885	Upper Steering Shaft Assy 208-3 Only.....	1
23	106311	Upper Steering Shaft Assy 211-3,211-5,216-5,211-A	1
24	909848	Cup Pt Set Screw 1/4-20 x 1/4.....	1
25	1085	Shaft Collar.....	1
26	109189	Bushing.....	1
27	106055	Steering Wheel 208-3, 211-3 Only.....	1
	102715	Steering Wheel 211-5 Only.....	1
	110743	Steering Wheel 216-5, 211-A Only.....	1
29	933221	Spirol Pin 1/4 x 2.....	1
30	109529	Collar 208-3 Only.....	1
	109195	Collar 211-3, 211-5, 216-5, 211-A Only.....	1
31	109262	Special Washer	X
32	911424	Bolt 3/8-16 x 2 Full Thread.....	1
36	111110	Front Spindle Assy RH 216-5 Only.....	1
37	111111	Front Spindle Assy LH 216-5 Only.....	1
38	108227	Lower Steering Shaft Assy 216-5 Only.....	1
39	108230	Tie Rod 216-5 Only.....	1
40	920242	Special Washer 216-5 Only.....	1
41	908035	Bolt 3/8-16 x 1 1/4 216-5 Only.....	1
42	5943	Spacer 216-5 Only.....	2
43	932017	Cotter Pin 1/8 x 1 216-5 Only.....	2
44	920242	Special Washer 216-5 Only.....	2
45	106950	Bushing 216-5 Only.....	1
46	920219	Special Washer 216-5 Only.....	1
47	108226	Crescent Ring 216-5 Only.....	1
48	908035	Bolt 3/8-16 x 1 1/4.....	2
49	915236	Jam Nut 3/8-16.....	3
50	1278	Washer.....	2
51	932026	Cotter Pin 5/32 x 1 1/4.....	2
52	102856	Steering Wheel Insert 216-5, 211-A Only.....	1

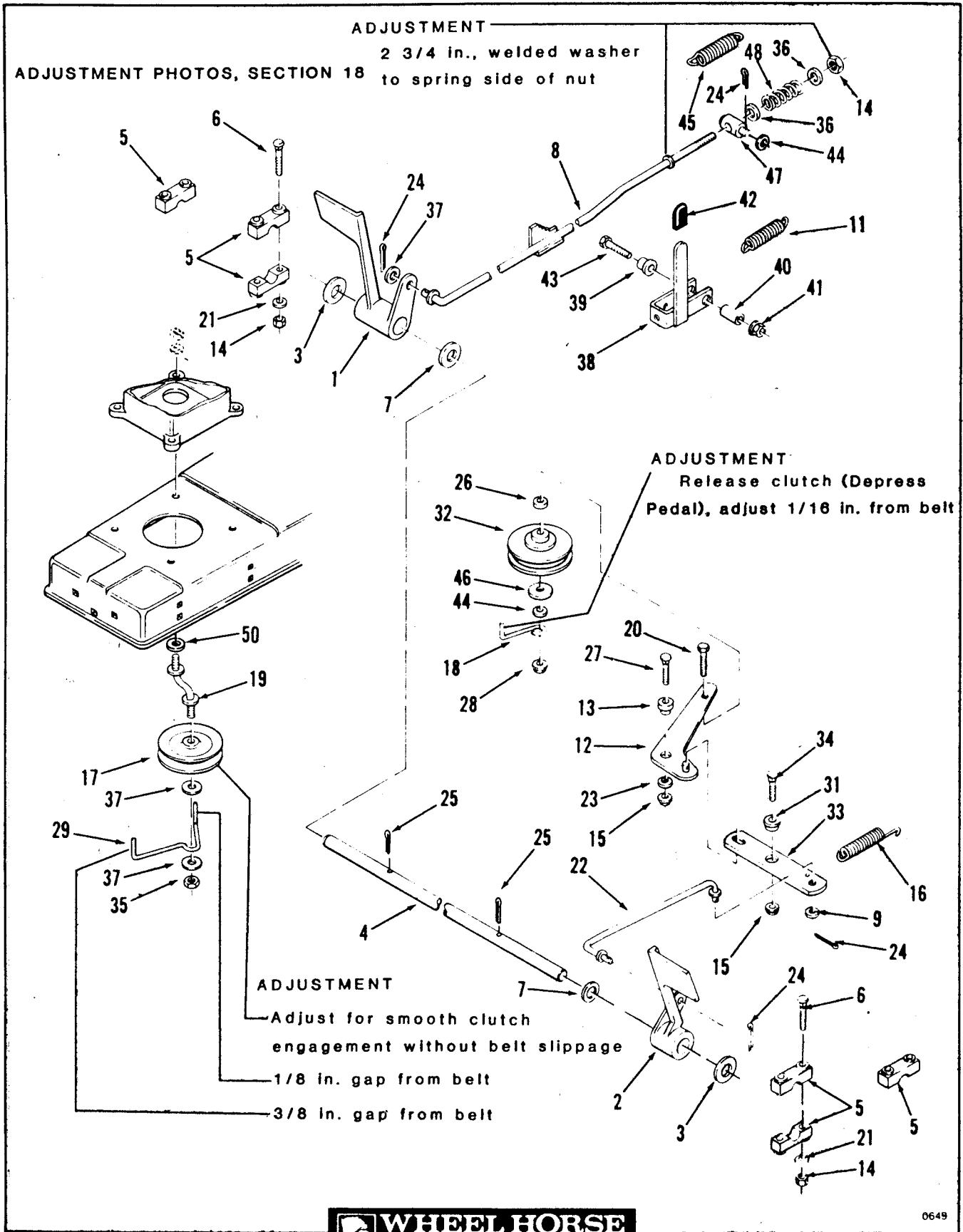


Figure 6-1 Brake and Clutch Linkage 3 & 5 Speeds

SECTION 6 - BRAKE AND CLUTCH LINKAGE 3 & 5 SPEEDS

11

ITEM	PART NUMBER	DESCRIPTION	200-Series
		Figure 6-1	
		BRAKE AND CLUTCH LINKAGE 3 & 5 SPEEDS	
1	108602	Pedal - Brake.....	1
2	110621	Pedal - Clutch.....	1
3	920261	Special Washer.....	2
4	108279	Shaft - Pedal.....	1
5	106585	Block Pivot.....	6
6	900041	Carriage Bolt 5/16-18 x 1 3/4.....	4
7	920215	Special Washer.....	2
8	110637	Brake Rod 208-3, 211-3 Only.....	1
	109489	Brake Rod 211-5 Only.....	1
	108797	Brake Rod 216-5 Only.....	1
9	920008	Washer 5/16.....	1
11	103628	Spring.....	1
12	106304	Idler Arm.....	1
13	106203	Spacer - Idler Arm.....	1
14	915112	Eslok Nut 5/16-18.....	5
15	102809	Flange Locknut 3/8-16.....	2
16	6533	Clutch Spring.....	1
17	8205	"V" Idler Pulley.....	1
18	103408	Belt Guide - Flat Idler.....	1
19	108923	Rod.....	1
20	908039	Bolt 3/8-16 x 2 1/4.....	1
21	920008	Washer 5/16 SAE.....	4
22	106202	Rod - Clutch.....	1
23	920249	Special Washer.....	1
24	932016	Cotter Pin 1/8 x 3/4.....	4
25	932025	Cotter Pin 5/32 x 1.....	2
26	104525	Spacer - Flat Idler.....	1
27	900066	Carriage Bolt 3/8-16 x 1 3/4.....	1
28	102809	Flange Locknut 3/8-16.....	1
29	108511	Belt Guide - "V" Idler.....	1
31	9475	Spacer - Clutch Bar.....	1
32	MW8821	Flat Idler Pulley.....	1
33	106382	Bar - Clutch.....	1
34	900064	Carriage Bolt 3/8-16 x 1 1/4.....	1
35	915113	Eslok Nut 3/8-16.....	1
36	920038	Washer 5/16 U.S.	2
37	920039	Washer 3/8 U.S.	3
38	110641	Parking Brake Lever.....	1
39	101765	Flange Bushing.....	1
40	102025	Spacer - Parking Brake.....	1
41	102809	Flange Locknut 3/8-16.....	1
42	6820	Grip.....	1
43	908038	Bolt 3/8-16 x 2.....	1
44	920009	Washer 3/8 SAE.....	2
45	107788	Spring.....	1
46	2844	Special Washer.....	1
47	6739	Trunnion.....	1
48	7602	Spring.....	1
50	920155	Internal Tooth Lockwasher 5/16.....	1

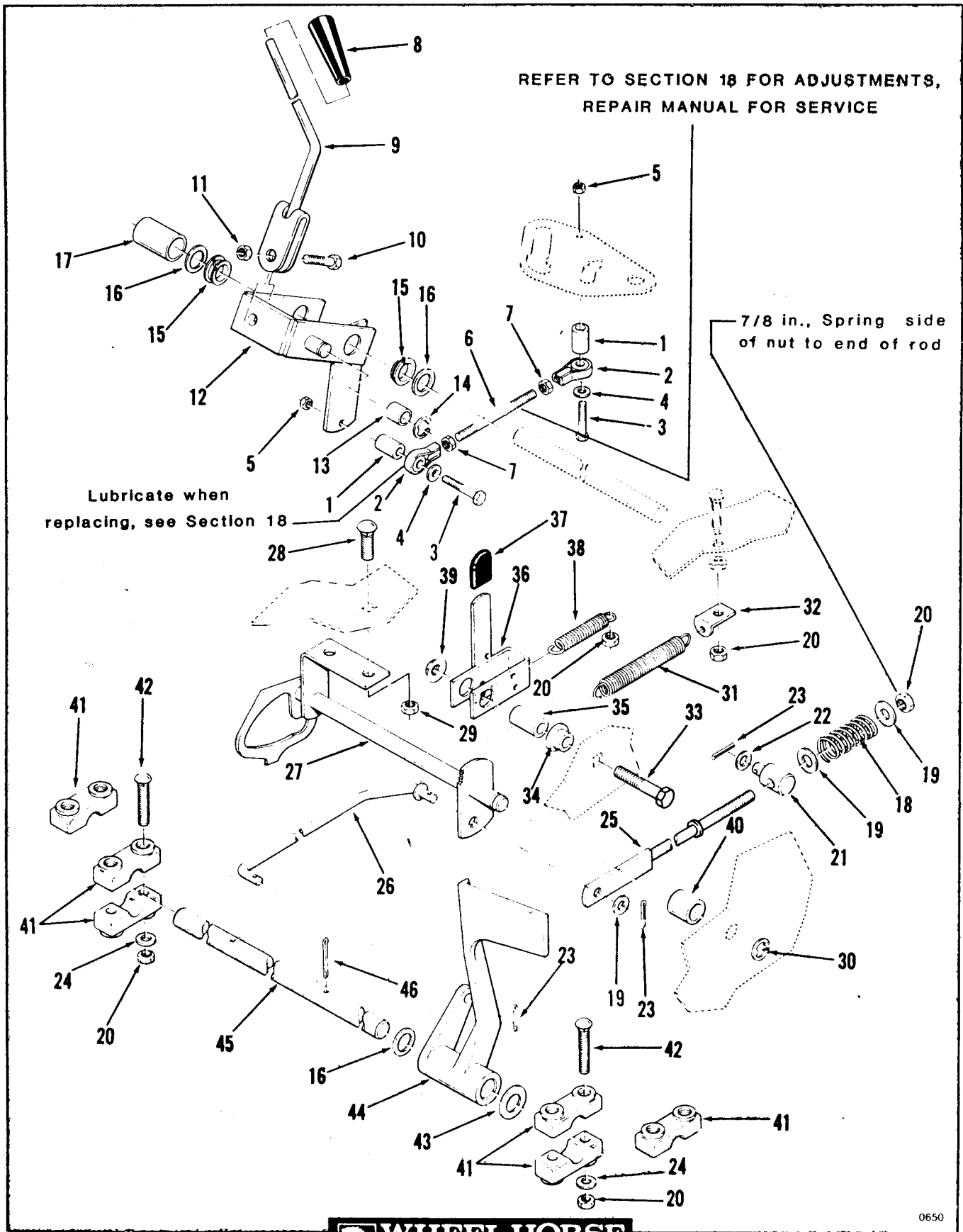


Figure 6-2 Clutch, Brake and Speed Control Linkage

ITEM	PART NUMBER	DESCRIPTION	200-Series
		Figure 6-2	
		CLUTCH, BRAKE AND SPEED CONTROL LINKAGE	
1	100304	Spacer.....	2
2	110189	Rod End.....	2
3	908007	Bolt 1/4-20 x 1 1/2.....	2
4	920007	Washer 1/4 SAE.....	2
5	915111	Eslok Nut 1/4-20.....	2
6	109413	Control Rod.....	1
7	915083	Jam Nut 1/4-28.....	2
8	6129	Shift Knob.....	1
9	110642	Control Arm.....	1
10	908035	Bolt 3/8-16 x 1 1/4.....	1
11	915663	Nut 3/8-16 E.S.	1
12	109417	Control Cam.....	1
13	100656	Cam Bearing.....	1
14	5701	E-Ring 1/2.....	1
15	5985	Bushing.....	2
16	920215	Special Washer.....	3
17	100171	Spacer.....	1
18	7602	Spring.....	1
19	920038	Washer 5/16 U.S.	3
20	915112	Eslok Nut 5/16-18.....	6
21	6739	Trunnion.....	1
22	920009	Washer 3/8 SAE.....	1
23	932008	Cotter Pin 3/32 x 3/4.....	3
24	920008	Washer 5/16 SAE.....	4
25	109606	Rear Brake Rod.....	1
26	109423	Front Brake Rod.....	1
27	109407	Neutral Return Shaft.....	1
28	900233	Carriage Bolt 3/8-16 x 3/4 Short Neck.....	2
29	915113	Eslok Nut 3/8-16.....	2
30	5701	E-Ring 1/2.....	1
31	6949	Clutch Spring.....	1
32	2534	Spring Clip.....	1
33	908038	Bolt 3/8-16 x 2.....	1
34	101765	Bushing.....	1
35	102025	Spacer.....	1
36	110643	Parking Brake Lever.....	1
37	6820	Grip.....	1
38	103628	Spring.....	1
39	102809	Flange Locknut 3/8-16.....	1
40	6264	Spacer.....	1
41	106585	Block Pivot.....	6
42	900041	Carriage Bolt 5/16-18 x 1 3/4.....	4
43	920261	Special Washer.....	2
44	110621	Brake Pedal.....	1
45	109401	Shaft.....	1
46	932025	Cotter Pin 5/32 x 1.....	2

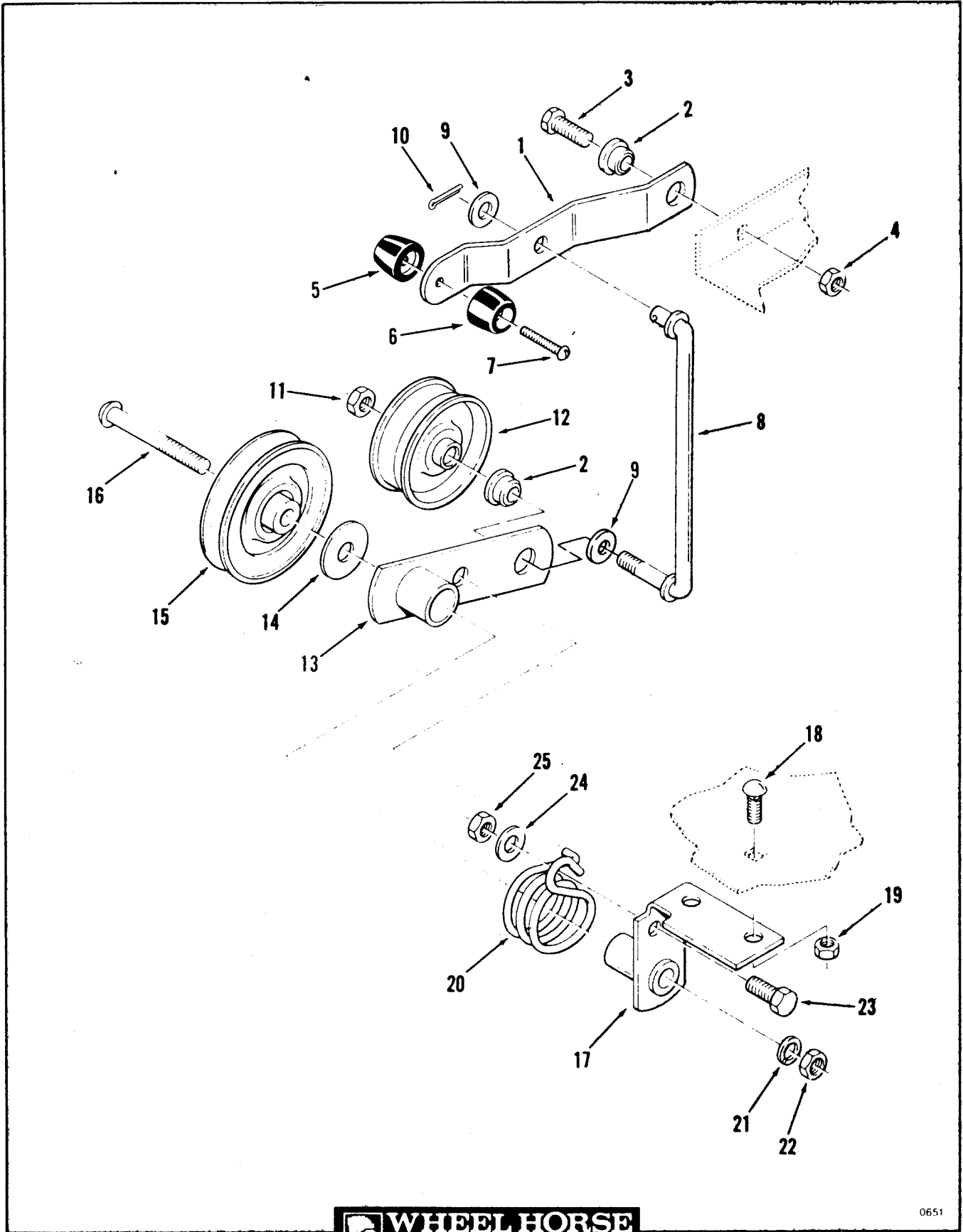
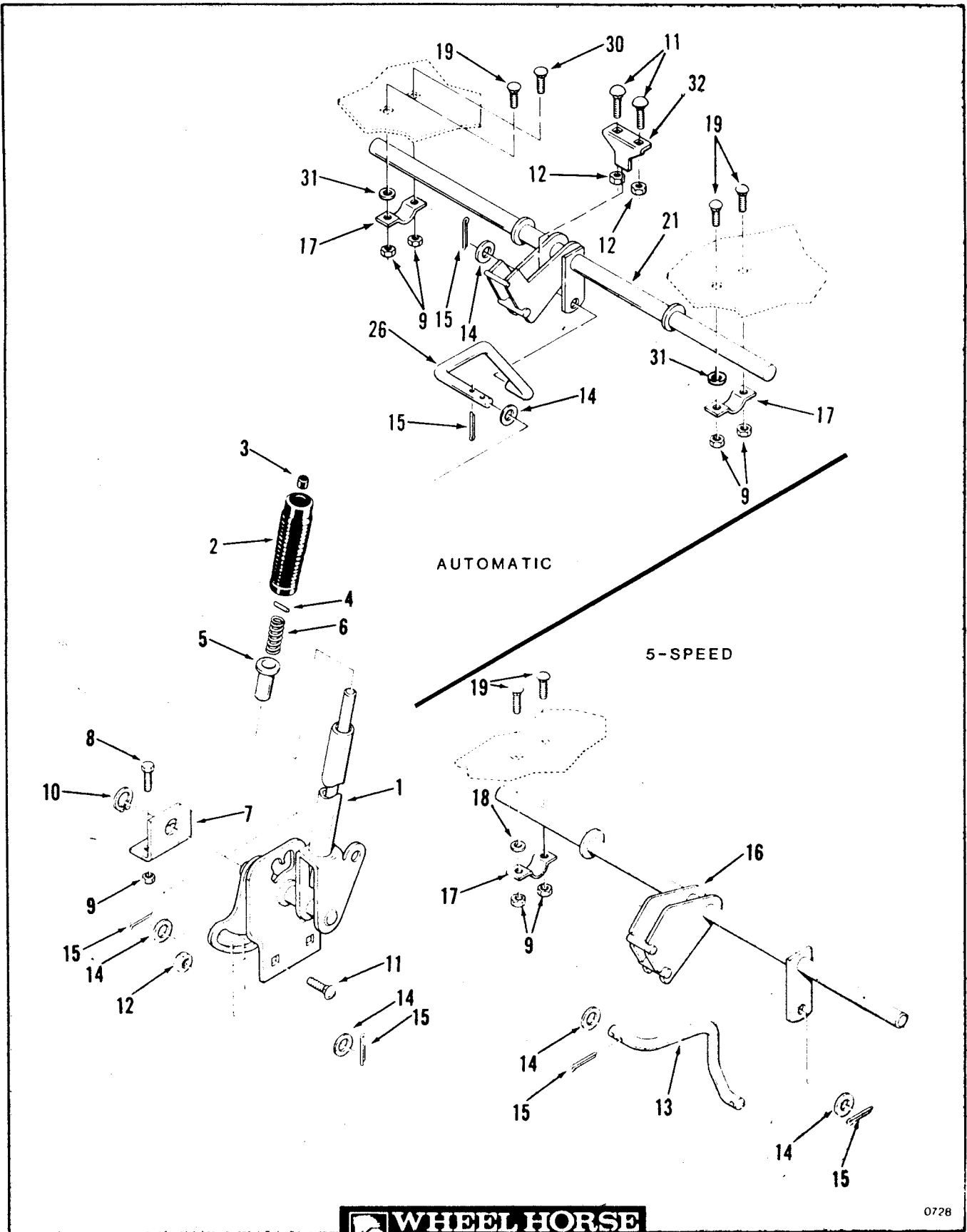


Figure 6-3 Clutch, Brake and Speed Control Linkage

ITEM	PART NUMBER	DESCRIPTION	200-Series
		Figure 6-3	
		CLUTCH, BRAKE AND SPEED CONTROL LINKAGE	
1	110512	Lever.....	1
2	106450	Spacer.....	2
3	908034	Bolt 3/8-16 x 1.....	1
4	915113	Eslok Nut 3/8-16.....	1
5	8722	Knob #10-24.....	1
6	8693	Knob.....	1
7	911747	Screw #10-24 x 1 1/4.....	1
8	109399	Rod.....	1
9	920009	Washer 3/8 SAE.....	2
10	932016	Cotter Pin 1/8 x 3/4.....	1
11	915113	Eslok Nut 3/8-16.....	1
12	MW8821	Flat Idler Pulley.....	1
13	109435	Idler Arm.....	1
14	2844	Special Washer.....	1
15	109444	"V" Idler Pulley.....	1
16	109437	Special Screw 3/8-16 x 2 3/4.....	1
17	109432	Idler Arm Support.....	1
18	900037	Carriage Bolt 5/16-18 x 3/4.....	2
19	915112	Eslok Nut 5/16-18.....	2
20	108177	Torsion Spring.....	1
21	920083	Lockwasher 3/8.....	1
22	915113	Nut 3/8-16.....	1
23	908032	Bolt 3/8-16 x 3/4.....	1
24	920009	Washer 3/8 SAE.....	1
25	915113	Eslok Nut 3/8-16.....	1



0728

Figure 7-1 Attachment Lift

ITEM	PART NUMBER	DESCRIPTION	200-Series
		Figure 7-1 ATTACHMENT LIFT	
1	109170	Lift Lever.....	1
2	6542	Grip.....	1
3	105316	Rod Cap.....	1
4	933148	Spirol Pin 1/8 x 1/2.....	1
5	8130	Spring Retainer.....	1
6	3624	Spring.....	1
7	109177	Bracket.....	1
8	908017	Bolt 5/16-18 x 3/4.....	2
9	915112	Eslok Nut 5/16-18.....	6
10	104822	Retaining Ring.....	1
11	900062	Carriage Bolt 3/8-16 x 3/4.....	4
12	915113	Eslok Nut 3/8-16.....	4
13	109336	Lift Rod 208-3, 211-3, 211-5, 216-5 Only.....	1
14	920011	Washer 1/2 SAE.....	3
15	932017	Cotter Pin 1/8 x 1.....	3
16	109333	Rear Lift 208-3, 211-3, 211-5, 216-5 Only.....	1
17	106288	Clamp.....	2
18	920039	Washer 3/8 U.S 208-3, 211-3, 211-5, 216-5 Only...	2
19	900037	Carriage Bolt 5/16-18 x 3/4 (3) used on 211-A....	4
21	110181	Rear Lift 211-A Only.....	1
26	110183	Lift Rod 211-A Only.....	1
30	900038	Carriage Bolt 5/16-18 x 1 211-A Only.....	1
31	920039	Washer 3/8 U.S 211-A Only.....	2
32	111089	Stop Bracket.....	1

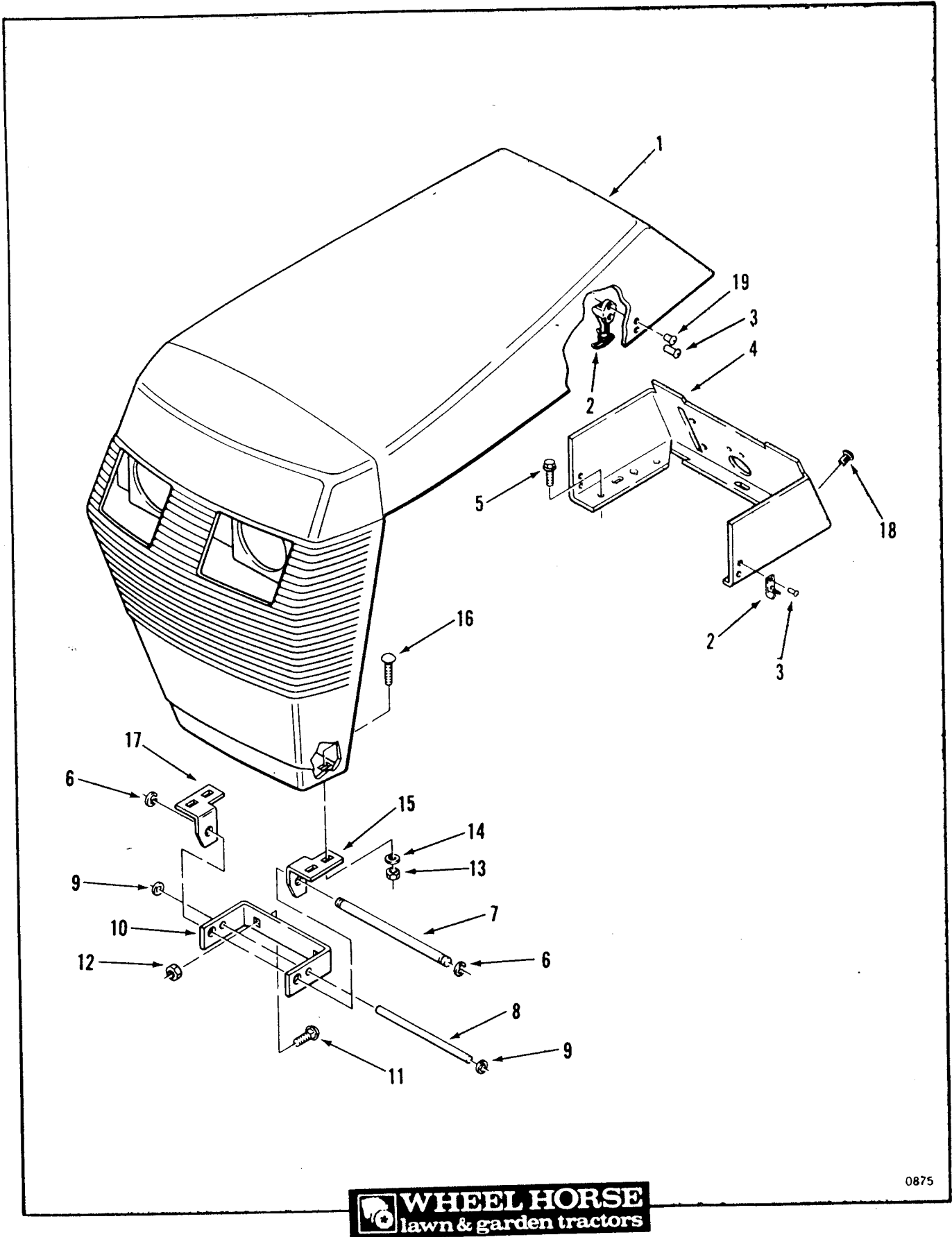
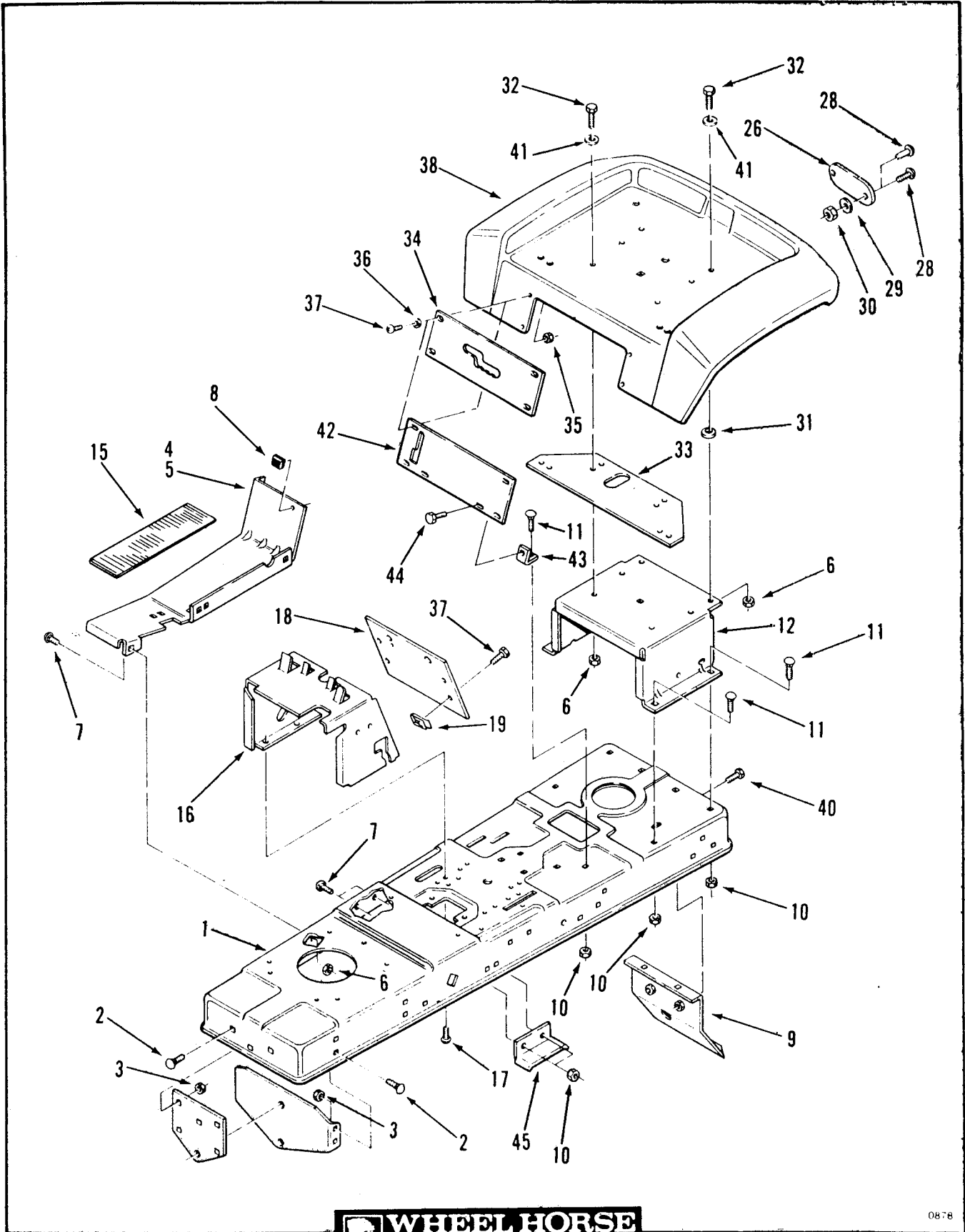


Figure 8-1 Frame, Sheet Metal and Covers

ITEM	PART NUMBER	DESCRIPTION	200-Series
------	-------------	-------------	------------

Figure 8-1
FRAME, SHEET METAL AND COVERS

1	110134	Hood 208-3, 211-3, 211-5, 211-A Only.....	1
	110135	Hood 216-5 Only.....	1
2	106825	Hood Latch Assy (109236 Handle 109237 Latch).....	2
3	923785	Pop Rivet - 1/8 Dia. x .294.....	4
4	110129B	Console.....	1
5	926694	S.T. Bolt 5/16-18 x 5/8.....	3
6	105797	"E" Ring.....	2
7	108458	Rod - Pivot.....	1
8	108243	Rod - Pivot Stop.....	1
9	5466	Speed Nut.....	2
10	109194	Bracket - Hood Pivot.....	1
11	900038	Carriage Bolt 5/16-18 x 1.....	2
12	915112	Eslok Nut 5/16-18.....	2
13	915111	Eslok Nut 1/4-20.....	4
14	920007	Washer 1/4 SAE.....	4
15	109146	Bracket - Grille Pivot LH.....	1
16	900015	Carriage Bolt 1/4-20 x 3/4.....	4
17	109145	Bracket - Grille Pivot RH.....	1
18	938052	Plug 208-3, 211-3, 211-5, 211-A Only.....	1
19	923784	Pop Rivet - 1/8 Dia x .232.....	2



0878

Figure 8-2 Frame, Sheet Metal and Covers

ITEM	PART NUMBER	DESCRIPTION	200-Series
		Figure 8-2	
		FRAME, SHEET METAL AND COVERS	
1	109156	Frame 208-3, 211-3, 211-5, 216-5.....	1
	109329	Frame 211-A Only.....	1
2	900037	Carriage Bolt 5/16-18 x 3/4.....	7
3	915662	Elastic Nut 5/16-18.....	7
4	110516	Footrest RH.....	1
5	110515	Footrest LH.....	1
6	915112	Eslok Nut 5/16-18.....	11
7	900037	Carriage Bolt 5/16-18 x 3/4.....	8
8	518211	Rubber Bumper 208-3, 211-3, 211-5, 216-5 Only....	2
9	109349	Hitch - Drawar.....	1
10	915112	Eslok Nut 5/16-18.....	5
11	900036	Carriage Bolt 5/16-18 x 5/8 211-A Only.....	3
	900037	Carriage Bolt 5/16-18 x 3/4.....	5
12	108249	Support - Seat 208-3, 211-3, 211-5, 216-5 Only...	1
	109425	Support - seat 211-A Only.....	1
15	106488	Footrest Pad 208-3, 211-3 Only.....	2
	110180	Footrest Rubber Pad 211-5 Only.....	2
	110632	Footrest Deluxe Rubber Pad RH 216-5, 211-A Only..	1
	110633	Footrest Deluxe Rubber Pad LH 216-5, 211-A Only..	1
16	109164	Hoodstand.....	1
17	926694	S.T. Screw 5/16-18 x 5/8.....	4
18	109168	Hoodstand Plate 208-3, 211-3 Only.....	1
	110801	Hoodstand Plate - Hourmeter - 211-5 Only.....	1
	110802	Hoodstand Plate - Hourmeter/Voltmeter 216-5,211-A Only.....	1
19	107069	Speed Nut 1/4-20.....	4
26	106557	Reflector - Rear.....	2
28	109193	Pop Rivet 3/16 x .570 Aluminum (Production).....	4
	910808	Screw #10-32 x 5/8 (Optional).....	4
29	920079	Lockwasher #10 (Optional).....	4
30	915551	Nut #10-32 (Optional).....	4
31	2844	Special Washer 211-3, 211-5, 216-5, 211-A Only...	2
32	908017	Bolt 5/16-18 x 3/4 - 211-3, 211-5, 216-5, 211-A..	4
	908015	Bolt 5/16-18 x 1/2 - 208-3 Only.....	3
33	109386	Seat Plate 211-3, 211-5, 216-5, 211-A Only.....	1
34	110195	Shift Plate 208-3, 211-3 Only.....	1
	109457	Shift Plate 211-5, 216-5 Only.....	1
35	915111	Eslok Nut 1/4-20.....	4
36	920007	Washer 1/4 SAE.....	4
37	910837	Pan HD. Screw 1/4-20 x 5/8.....	8
38	109126	Fender.....	1
40	908016	Bolt 5/16-18 x 5/8.....	2
41	920008	Washer 5/16 SAE.....	4
42	110510	Front Fender Plate 211-A Only.....	1
43	110511	Fender Bracket 211-A Only.....	1
44	926671	S.T. Bolt 1/4 -20 x 1/2 211-A Only.....	1
45	109451	Belt Support 211-A Only.....	1

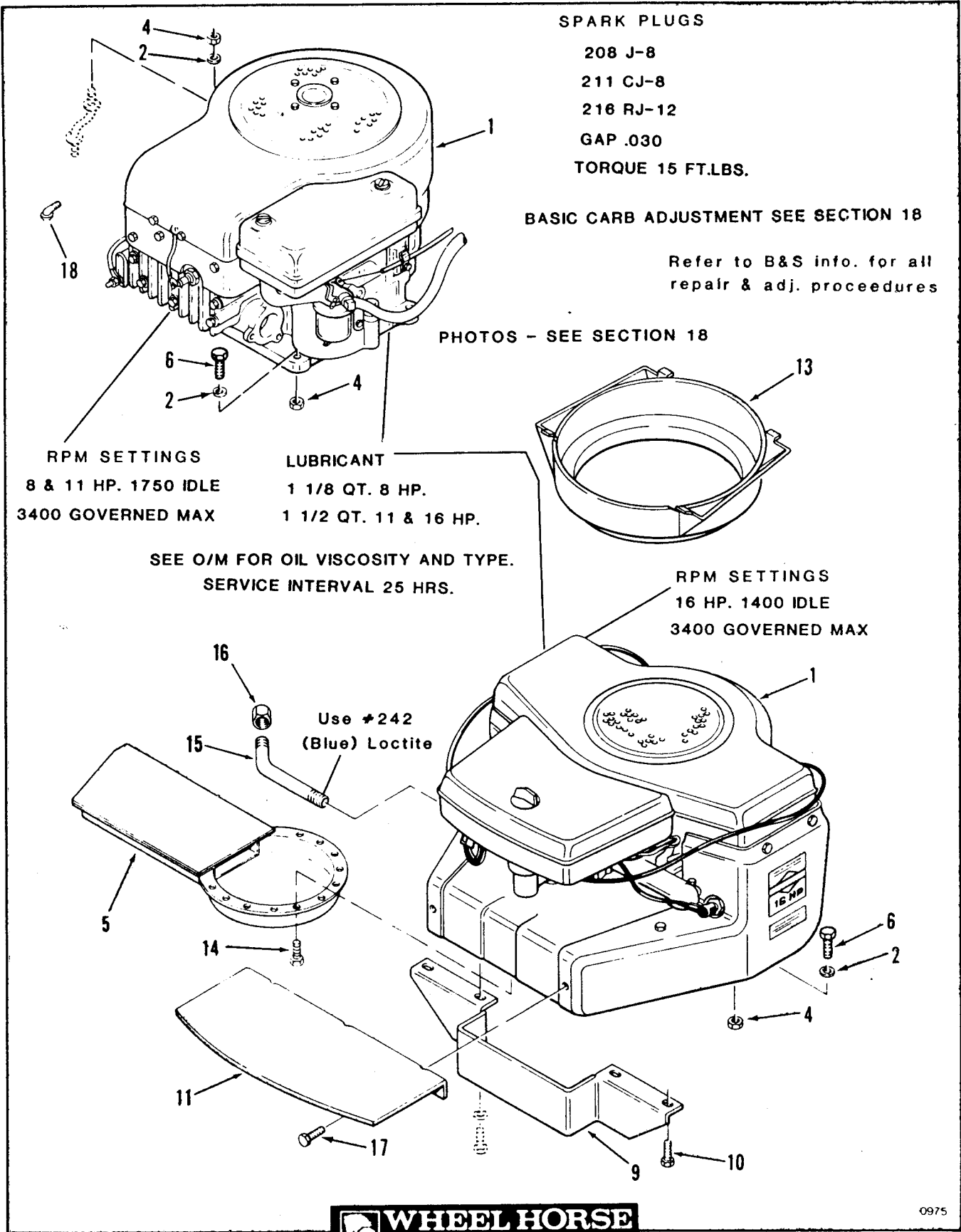


Figure 9-1 Engine

ITEM	PART NUMBER	DESCRIPTION	200-Series
		Figure 9-1 ENGINE	
1	110682*	Engine - 08HP - B&S Model 191707, Type 2153-01 208-3 Only.....	X
	109472*	Engine - 11HP - B&S Model 252707, Type 0657-01 211-3 Only.....	X
	110169*	Engine - 11HP - B&S Model 253707, Type 0158-01 211-5, 211-A Only.....	X
	110056*	Engine - 16HP - B&S Model 402707, Type 0130-05 216-5 Only.....	X
2	920008	Washer 5/16 SAE.....	5
4	915112	Eslok Nut 5/16-18.....	4
5	110809	Exhaust Deflector 216-5 Only.....	1
6	908021	Bolt 5/16-18 x 1 1/2.....	3
9	108552	Duct - Rear 216-5 Only.....	1
10	908001	Bolt 1/4-20 x 1/2 216-5 Only.....	2
11	109512	Duct - Front 216-5 Only.....	1
13	108583	Duct - Hood Air Intake 216-5 Only.....	1
14	108993	Bolt #8-32 x 3/8 216-5 Only.....	4
15	109544	Drain Pipe 216-5 Only.....	1
16	5224	Cap 3/8 NPT 216-5 Only.....	1
17	911684	Screw #14-10 x 3/4 216-5 Only.....	2
18	943083	Street Elbow.....	1

*Order Replacement Parts or Complete Assembly Through Manufacturer's Distribution System, Using Model/Spec. Number Shown.

WHEEL HORSE Part Number Is Listed For Cross-Reference Purposes Only; Item Is Not Available Through WHEEL HORSE.

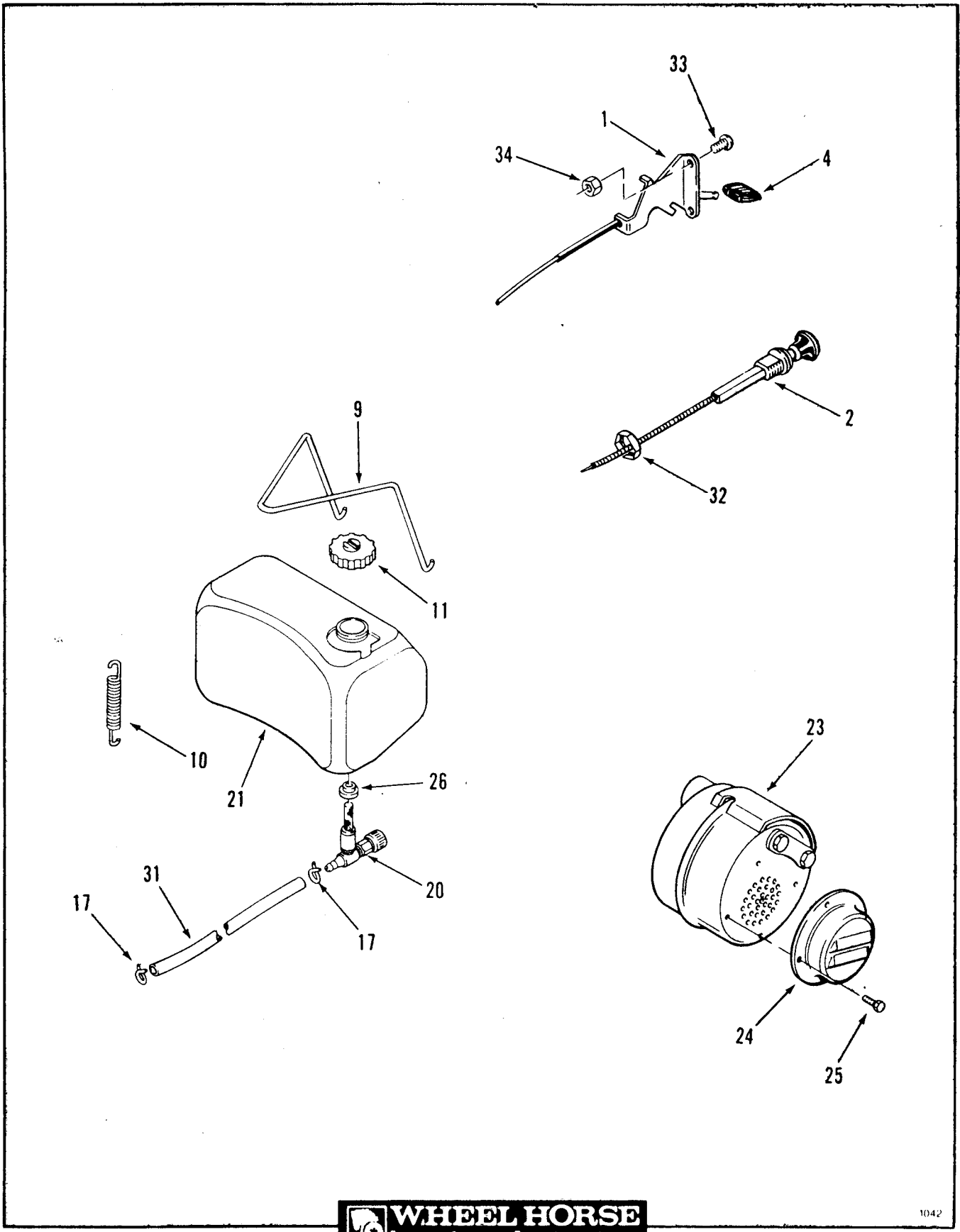
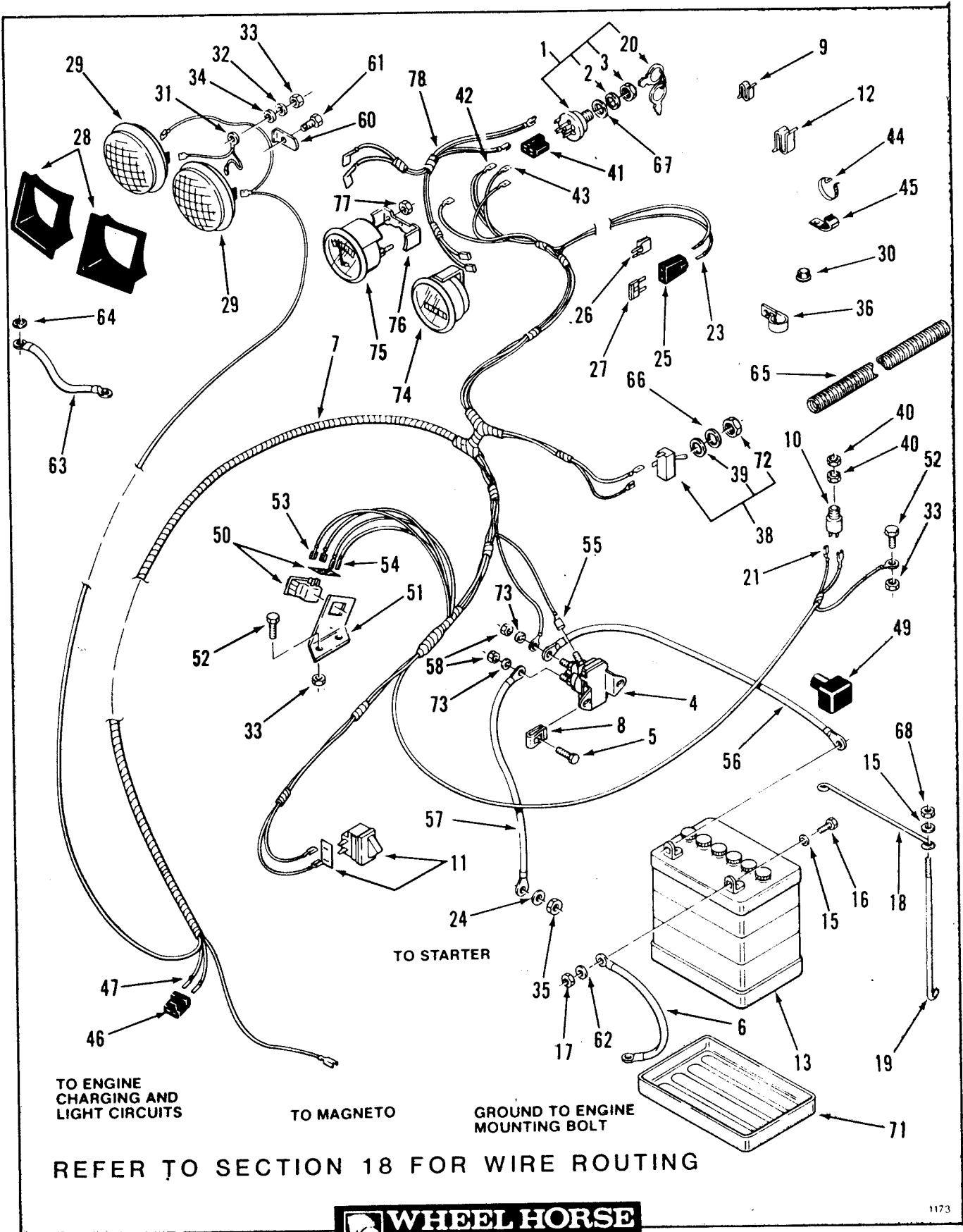


Figure 10-1 Fuel and Exhaust Systems

ITEM	PART NUMBER	DESCRIPTION	200-Series
		Figure 10-1 FUEL AND EXHAUST SYSTEMS	
1	110810	Throttle Control 216-5 Only.....	1
	110684	Choke/Throttle Control 208-3, 211-3, 211-5, 211-A	1
2	110811	Choke Control 216-5 Only.....	1
4	108917	Knob.....	X
9	109960	Hold Down Wire.....	1
10	107788	Hold Down Spring.....	1
11	108011	Gasoline Cap.....	1
17	108898	Hose Clamp.....	2
20	104048	Fuel Valve.....	1
21	109961	Fuel Tank Assy.....	1
23	110774	Muffler - Black - 211-3, 211-5 Only.....	1
	110771	Muffler - Chrome - 211-A Only.....	1
24	110775	Deflector - Black - 211-3, 211-5 Only.....	1
	110772	Deflector - Chrome - 211-A Only.....	1
25	110776	Hex HD Screw 8-32 x 3/8 - Black - 211-3, 211-5...	4
	110773	Hex HD Screw 8-32 x 3/8 - Chrome - 211-A Only....	4
26	104047	Bushing.....	1
31	110433	Fuel Hose 14.5 in. (36.2 cm) 208-3, 211-3, 211-5, 211-A Only.....	1
	9147	Fuel Hose 14 in. (35.6 cm) 216-5 Only.....	1
32	109530	Palnut 216-5 Only.....	1
33	910792	Screw #10-24 x 1/2.....	X
34	915740	Nut #10-24.....	X

NOTE: MUFFLER SUPPLIED BY ENGINE MANUFACTURER ON
208-3 & 216-5 Models



1173

Figure 11-1 Electrical System

ITEM	PART NUMBER	DESCRIPTION	200-Series
		Figure 11-1 ELECTRICAL SYSTEM	
1	103991	Ignition Switch Assy.....	1
2	920160	Lockwasher 5/8.....	1
3	101884	Special Nut.....	1
4	109605	Solenoid.....	1
5	960151	Whizlok Bolt 1/4-20 x 1/2.....	2
6	108281	Cable - Battery To Ground 10.0 in. (25.4 cm).....	1
7	109983	Wiring Harness Assy 208-3 Only.....	1
	109340	Wiring Harness Assy 211-3, 211-5, 211-A Only.....	1
	109341	Wiring Harness Assy 216-5 Only.....	1
8	106370	Clip 1/4-20.....	2
9	3023	Speed Clip 1/16 211-3, 211-5, 216-5, 211-A Only..	7
10	109330	Seat Switch 208-3 Only.....	1
	109328	Seat Switch 211-3, 211-5, 216-5, 216-A Only.....	1
11	110970	Interlock Switch-Clutch S/A (103480 Switch 110502 Shield).....	1
12	519337	Speed Clip 1/8.....	1
13	104962	Battery.....	1
15	920007	Washer 1/4 SAE.....	4
16	908003	Bolt 1/4-20 x 3/4.....	2
17	915111	Nut 1/4-20.....	2
18	105504	Rod - Hold Down.....	1
19	109547	Hook - Battery Strap.....	2
20	7262	Ignition Key - Set of 2.....	1
21	8765	Female Terminal - Part of 7.....	2
23	108995	Fuse Terminal - Part of 7.....	2
24	920081	Lockwasher 1/4 SAE.....	1
25	109117	Fuse Body - Part of 7.....	1
26	109445	Fuse Body Clip.....	1
27	109355	Fuse 15 AMP.....	1
28	109080	Headlight Retainer - Set of 2.....	1
29	102881	Headlight.....	2
30	938018	Bushing.....	1
31	108130	Headlight Ground Wire.....	1

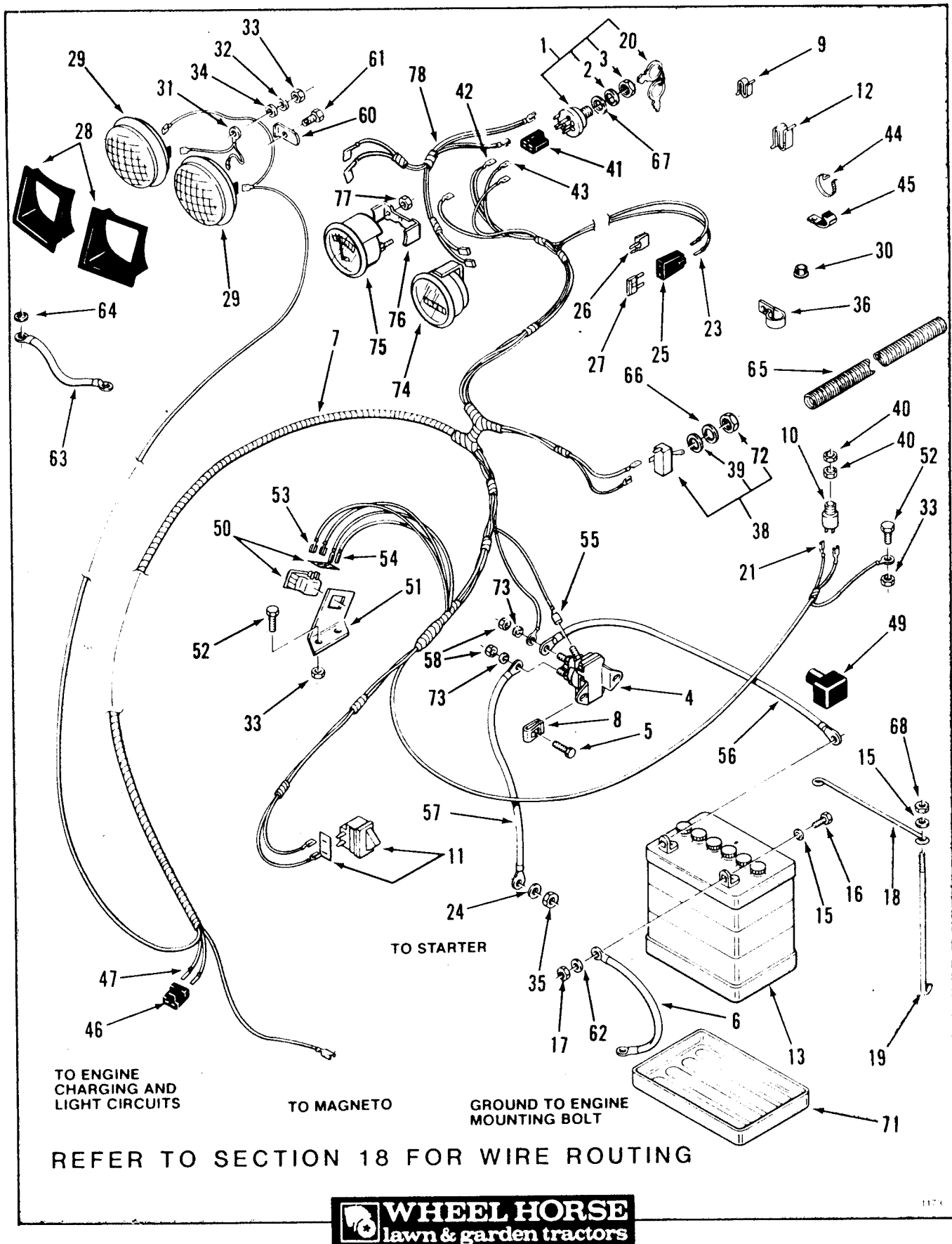


Figure 11-1 Electrical System

ITEM	PART NUMBER	DESCRIPTION	200-Series
Figure 11-1 ELECTRICAL SYSTEM (CONT'D)			
33	915112	Eslok Nut 5/16-18.....	4
34	920155	Lockwasher 5/16 Internal Tooth.....	1
35	915234	Nut 1/4-20.....	1
36	105490	Clamp 216-5 Only.....	2
38	102138	Light Switch.....	1
39	102950	Locking Ring.....	1
40	105805	Special Nut 211-3, 211-5, 216-5, 211-A Only.....	2
41	105302	Connector Body - Ign Sw - Part of 7.....	1
42	105306	Female Terminal - Part of 7.....	1
43	102651	Female Terminal - Part of 7.....	3
44	518017	Cable Tie 211-3, 211-5, 216-5, 211-A Only.....	X
44	100571	Cable Tie 7 in.(17.8cm).....	X
45	8830	Clip.....	2
46	518151	Connector Body - Part of 7.....	1
47	518074	Socket Connector - Part of 7.....	2
49	109553	Terminal Cover.....	1
50	110971	Interlock Switch - PTO - S/A(109327 Switch 110501 Shield).....	1
51	109178	Bracket.....	1
52	908016	Bolt 5/16-18 x 5/8.....	3
53	518077	Female Terminal 0.187 - Part of 7.....	2
54	109378	Female Terminal 0.110 - Part of 7.....	2
55	518246	Push-On Terminal - Part of 7.....	1
56	109361	Battery To Solenoid Cable 14.0 in. (35.6 cm).....	1
57	109362	Starter To Solenoid Cable 23.0 in. (58.4 cm) 208-3, 211-3, 211-5, 211-A	1
	109363	Starter To Solenoid Cable 16.0 in. (40.6 cm) 216-5 Only.....	1
58	915234	Jam Nut 1/4-20.....	2
60	109459	Lock.....	2
61	926671	S.T. Bolt 1/4-20 x 1/2.....	2
62	920081	Lockwasher 1/4.....	2
63	109910	Ground Wire.....	1
64	920155	Internal Lockwasher.....	1
65	109646	Conduit 216-5 Only.....	1
66	920259	Special Washer.....	1
67	920262	Special Washer.....	1
68	915111	Eslok Nut 1/4-20.....	2
71	110298	Battery Tray.....	1
72	105805	Special Nut.....	1
73	920081	Lockwasher 1/4.....	2
74	110853	Hourmeter Assy 211-5, 216-5, 211-A Only.....	1
75	110741	Voltmeter 216-5, 211-A Only.....	1
76	109650	Mounting Clamp 216-5, 211-A Only.....	1
77	5924	Nut 216-5, 211-A Only.....	2
78	110723	Wiring Harness Meters 211-5, 216-5, 211-A Only...	1

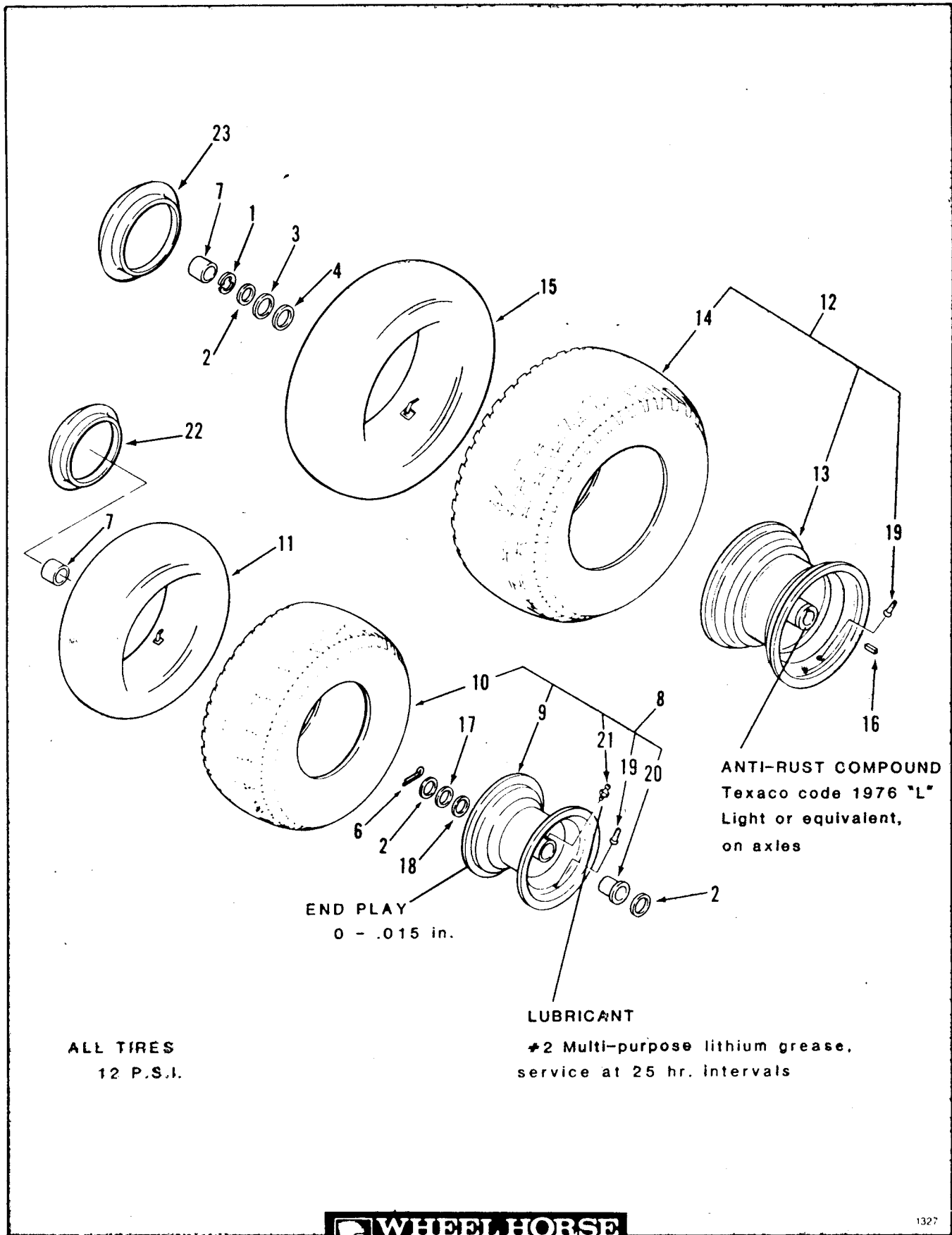


Figure 13-1 Wheels and Tires

ITEM	PART NUMBER	DESCRIPTION	200-Series
		Figure 13-1 WHEELS AND TIRES	
1	104636	E Ring 3/4 Inch 208-3, 211-3, 211-5, 216-5 Only..	2
	5700	E Ring 1 Inch 211-A Only.....	2
2	109262	Special Washer Hubcap 1 5/16 OD (4) Used On 211-A	6
	920239	Special Washer Hubcap (Rear) 1 1/2 OD 211-A Only.	2
3	5210	Shim Washer .015 208-3, 211-3, 211-5, 216-5 Only.	X
	920252	Shim Washer .015 211-A Only.....	X
4	1278	Shim Washer .050 208-3, 211-3, 211-5, 216-5 Only.	X
	920251	Shim Washer .050 211-A Only.....	X
6	932026	Cotter Pin 5/32 x 1 1/4.....	2
7	109261	Hub Cap 208-3, 211-3, 211-5 Only.....	4
8	110699	Assy - Wheel & Tire Front 208-3 Only.....	2
	110705	Assy - Wheel & Tire Front 211-3 Only.....	2
	110706	Assy - Wheel & Tire Front 211-5 Only.....	2
	110813	Assy - Wheel & tire W/Tube Front 216-5,211-A Only	2
9	110701	Front Wheel 208-3, 211-3 Only.....	1
	110908	Front Wheel 211-5 Only.....	1
	110815	Front Wheel 216-5, 211-A Only.....	1
10	109504	Front Tire 13 x 5.00-6 Rib Tread 208-3 Only.....	1
	8188	Front Tire 13 x 5.00-6 Turf Tread 211-3 Only.....	1
	104307	Front Tire 13 x 6.50-6 Turf Tread 211-5 ,216-5, 211-A Only.....	1
* 11	100043	Front Tube - Service Only - 208-3, 211-3 Only....	1
	5712	Front Tube - Service Only - 211-5 Only.....	1
	101779	Front Tube 216-5, 211-A Only.....	1
12	110702	Assy - Wheel & Tire - Rear 208-3 Only.....	2
	110709	Assy - Wheel & Tire - Rear 211-3 Only.....	2
	110710	Assy - Wheel & Tire - Rear 211-5 Only.....	2
	110816	Assy - Wheel & Tire W/Tube - Rear 216-5 Only.....	2
	110818	Assy - Wheel & Tire W/Tube - Rear 211-A Only.....	2
13	110703	Rear Wheel (Complete) 208-3 Only.....	1
	110711	Rear Wheel 211-3, 211-5 Only.....	1
	110817	Rear Wheel 216-5 Only.....	1
	110819	Rear Wheel 211-A Only.....	1
14	8287	Rear Tire 18 x 6.50-8 - 208-3 Only.....	1
	8191	Rear Tire 18 x 8.50-8 - 211-3 Only.....	1
	105451	Rear Tire 18 x 9.50-8 - 211-5 Only.....	1
	108807	Rear Tire 20 x 10.0-10.0 - 216-5, 211-A Only.....	1
15	8462	Rear Tube - Service Only - 208-3 Only.....	1
	106396	Rear Tube - Service Only - 211-3 Only.....	1
	105450	Rear Tube - Service Only - 211-5 Only.....	1
	100040	Rear Tube 216-5, 211-A Only.....	1
16	1120	Sq Key 3/16 x 1 3/4 208-3, 211-3, 211-5, 211-5...	2
	2590	Sq Key 1/4 x 2 211-A Only.....	2
17	1278	Shim Washer .050.....	X
18	5210	Shim Washer .015.....	X
19	5108	Valve Stem (Tubeless Tire).....	1
20	100166	Flange Bushing.....	2
21	1030	Grease Fitting	1
22	110783	Hub Cap Chrome (6 Inch) 215-5, 211-A Only.....	2
23	110785	Hub Cap Chrome (10 Inch) 216-5, 211-A Only.....	2

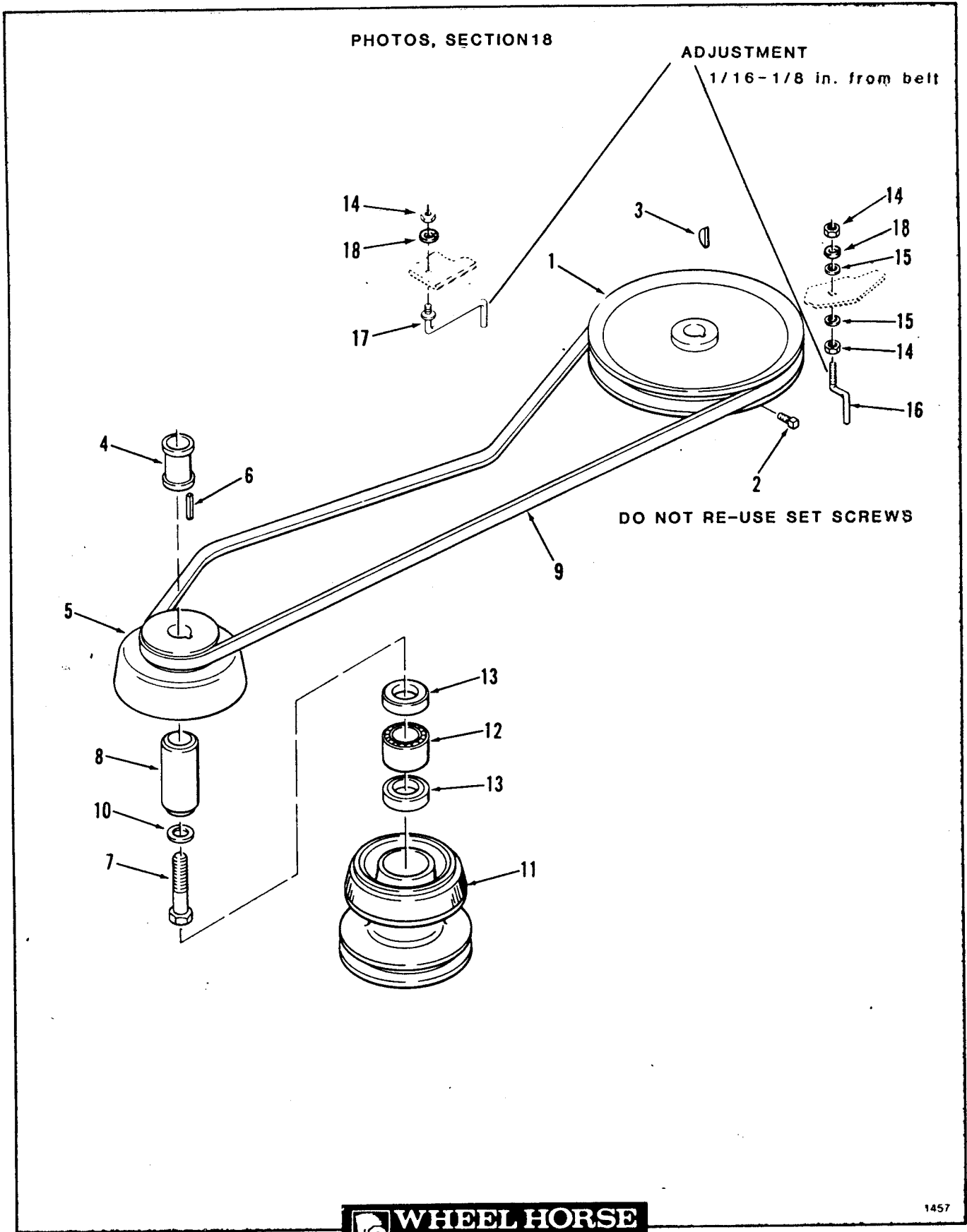


Figure 14-1 Drive Belt and Pulleys

ITEM	PART NUMBER	DESCRIPTION	200-Series
Figure 14-1			
DRIVE BELT AND PULLEYS			
1	106387	Pulley - Transmission 208-3, 211-3, 211-5 Only...	1
	108790	Pulley - Transmission 216-5 Only.....	1
2	909540	Sq. Hd. Set Screw 5/16-18 x 1/2 Eslok.....	2
3	937225	Hi-Pro Key #9 - 3/16 x 3/4.....	1
4	106563	Tube Spacer 208-3, 211-3, 211-5 Only.....	1
	109731	Tube Spacer 216-5 Only.....	1
5	108408	Pullèy - Engine.....	1
6	105453	Sq Key 1/4 x 5/8.....	1
7	908195	Eslok Bolt 7/16-20 x 1.....	1
8	106564	Bearing Race.....	1
9	108427	Belt - Transmission Drive.....	1
10	107750	Special Washer.....	1
11	106565	Assy - Pulley - Mower Drive.....	1
12	106769	Needle Bearing.....	1
13	6663	Oil Seal.....	2
14	915112	Eslok Nut 5/16-18.....	3
15	920008	Washer 5/16.....	2
16	108397	Belt Guide.....	1
17	109041	Belt Guide.....	1
18	920082	Lockwasher 5/16.....	2

REFER TO SECTION 18 FOR ADJUSTMENTS, REPAIR MANUAL FOR SERVICE

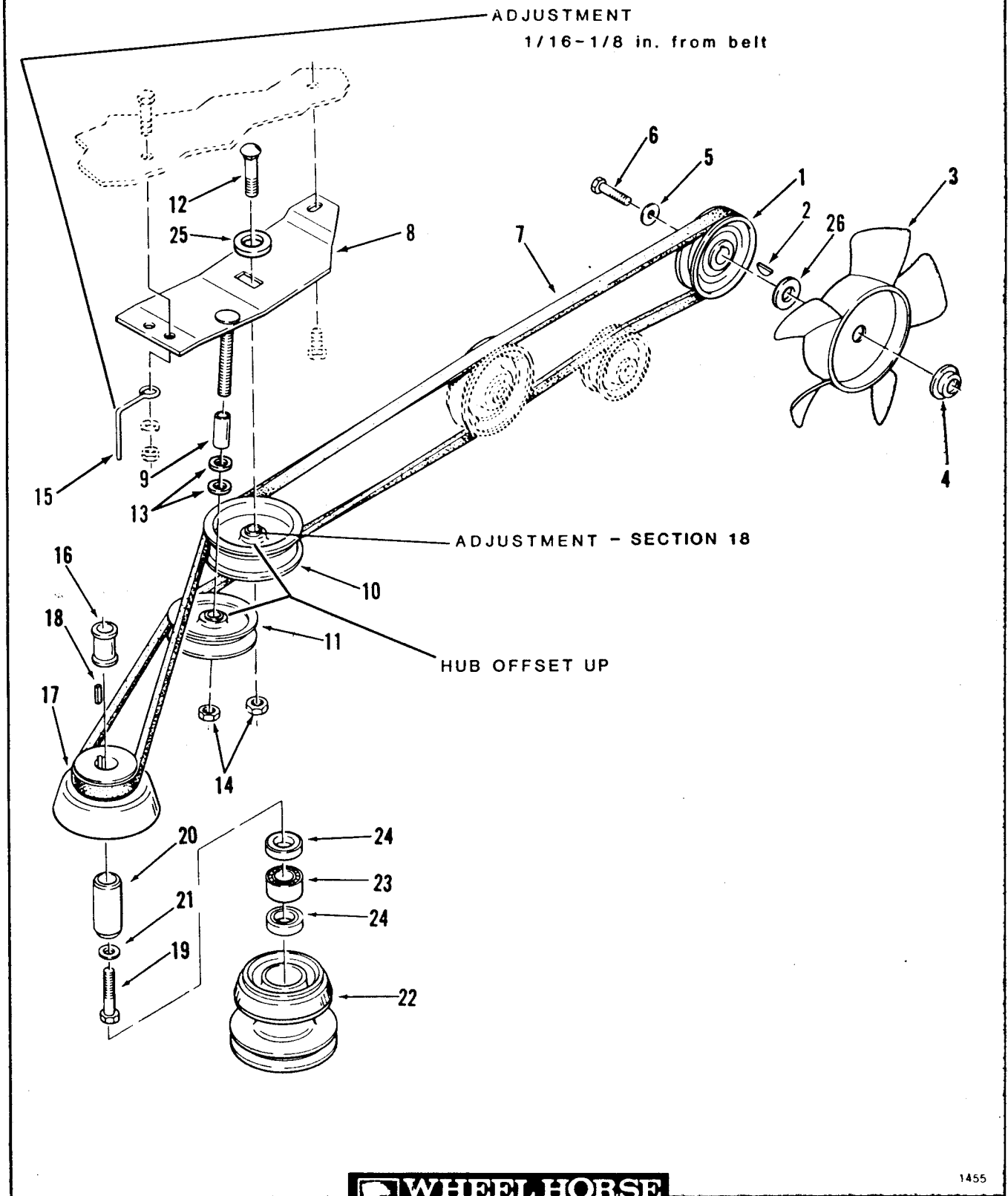


Figure 14-2 Drive Belt and Pulleys - Automatic Model

ITEM	PART NUMBER	DESCRIPTION	200-Series
Figure 14-2 DRIVE BELT AND PULLEYS - AUTOMATIC MODEL			
1	109387	Transmission Pulley.....	1
2	937082	Woodruff Key 1/8 x 1/2.....	1
3	109389	Fan Blade.....	1
4	109798	Fan Spacer.....	1
5	103995	Washer.....	1
6	908005	Eslok Bolt 1/4-20 x 1.....	1
7	109427	Drive Belt.....	1
8	109429	Pulley Bracket.....	1
9	109414	Spacer.....	1
10	105874	Flat Idler Pulley.....	1
11	8205	"V" Idler Pulley.....	1
12	900065	Carriage Bolt 3/8-16 x 1 1/2.....	1
13	920009	Washer 3/8 SAE.....	2
14	915113	Eslok Nut 3/8-16.....	2
15	6149	Belt Retainer.....	1
16	106563	Tube Spacer.....	1
17	108408	Engine Pulley.....	1
18	105453	Square Key 1/4 x 5/8.....	1
19	908195	Eslok Bolt 7/16-20 x 1.....	1
20	106564	Bearing Race.....	1
21	107750	Special Washer.....	1
22	106565	Mower Drive Pulley.....	1
23	106769	Needle Bearing.....	1
24	6663	Oil Seal.....	2
25	920011	Washer 1/2 SAE.....	1
26	920261	Special Washer.....	1

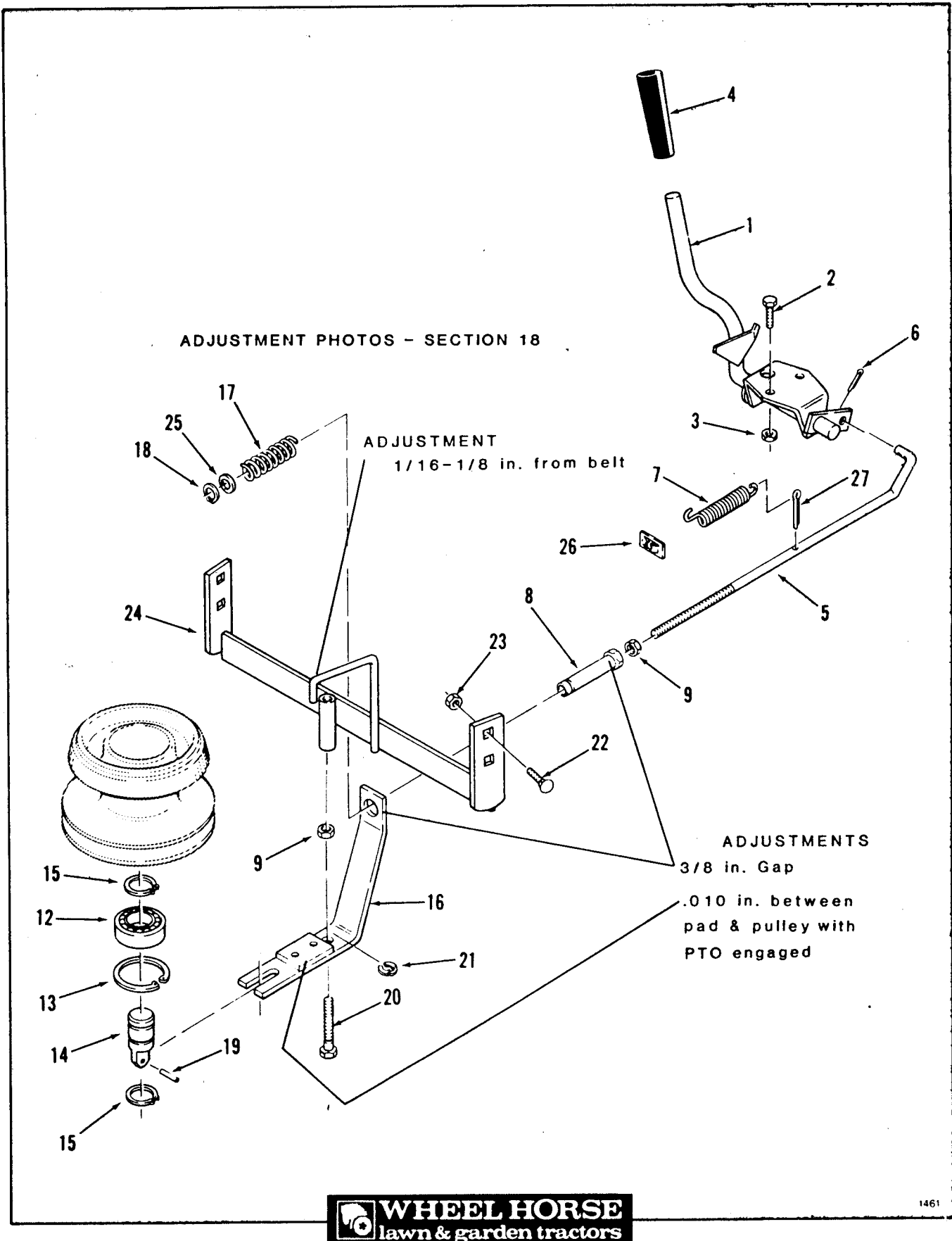
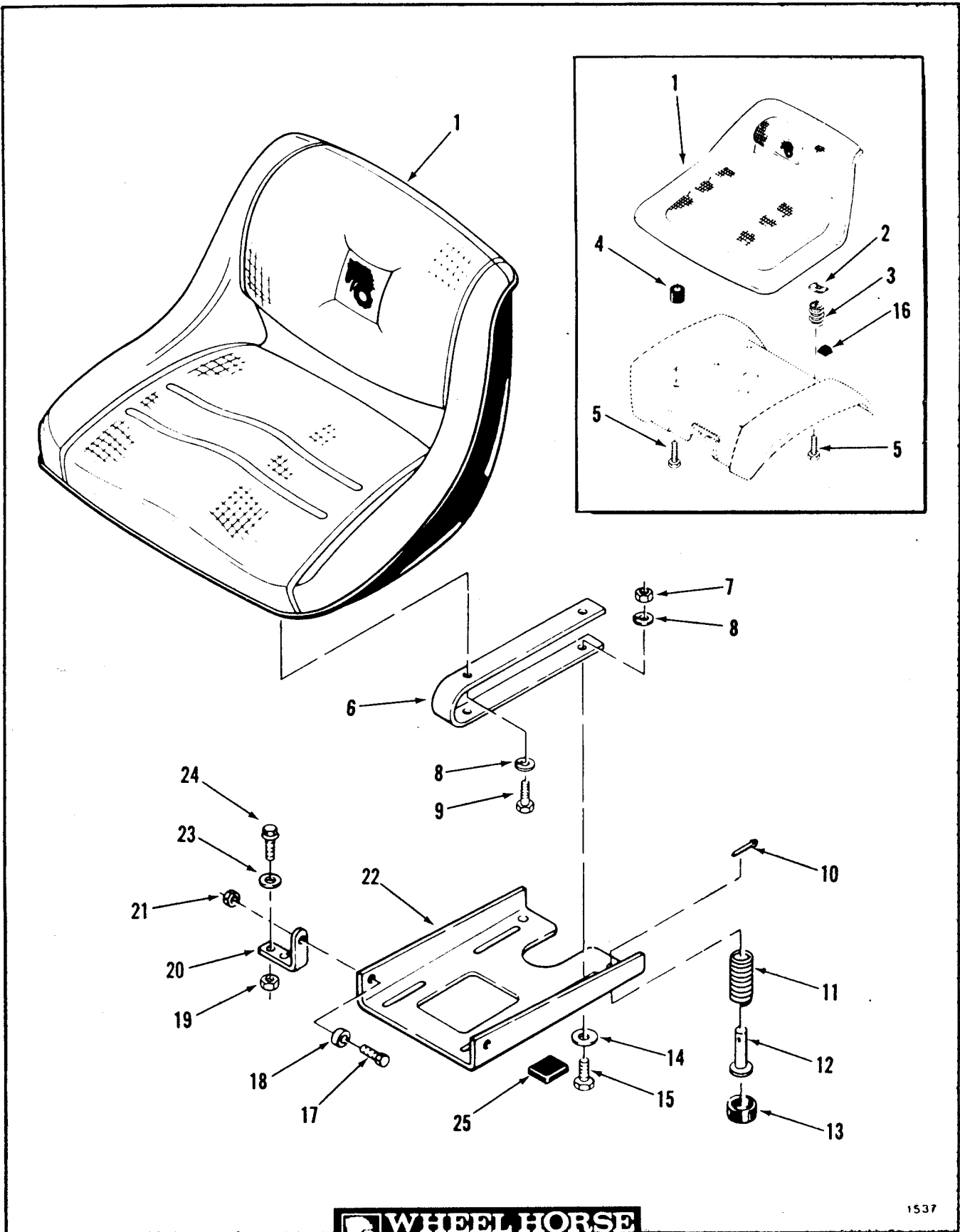


Figure 14-3 PTO Clutch

ITEM	PART NUMBER	DESCRIPTION	200-Series
		Figure 14-3	
		PTO CLUTCH	
1	110645	PTO Clutch Lever.....	1
2	908016	Bolt 5/16-18 x 5/8.....	2
3	915112	Eslok Nut 5/16-18.....	2
4	9038	Grip.....	1
5	108426	PTO Clutch Rod.....	1
6	932008	Cotter Pin 3/32 x 3/4.....	1
7	1014	Spring.....	1
8	107818	Threaded Spacer - PTO Clutch.....	1
9	915235	Jam Nut 5/16-18.....	2
12	109842	Ball Bearing.....	1
13	936032	Internal Snap Ring 1 3/4.....	1
14	111084	Shaft - Clutch Housing.....	1
15	936125	External Snap Ring 3/4.....	2
16	109346	Clutch Brake Bracket.....	1
17	106573	Spring - Clutch 208-3, 211-3, 211-5, 211-A Only..	1
	109832	Spring - Clutch 216-5 Only.....	1
18	107825	Snap Ring - Special.....	1
19	933198	Spirol Pin 7/32 x 7/8.....	1
20	107748	Screw - Clutch Adjust.....	1
21	107772	Retaining Ring.....	1
22	900037	Carriage Bolt 5/16-18 x 3/4.....	4
23	915112	Eslok Nut 5/16-18.....	4
24	108459	Clutch Mounting Bracket 208-3,211-3,211-5,211-A..	1
	108411	Clutch Mounting Bracket 216-5 Only.....	1
25	920259	Special Washer.....	1
26	7721	Speed Nut.....	1
27	932016	Cotter Pin 1/8 x 3/4.....	1



1537

Figure 15-1 Seat and Suspension

ITEM	PART NUMBER	DESCRIPTION	200-Series
		Figure 15-1	
		SEAT AND SUSPENSION	
1	107016	Seat 208-3 Only.....	1
	108912	Seat 211-3 Only.....	1
	105259	Seat 211-5 Only.....	1
	109342	Seat 216-5, 211-A Only.....	1
2	108457	Push Nut 208-3 Only.....	2
3	104841	Spring	2
4	108787	Grommet - Front 208-3 Only.....	2
5	108438	Special Bolt - Rear 208-3 Only.....	2
	908018	Eslok Bolt 5/16-18 x 7/8 - Front 208-3 Only.....	2
6	110920	Seat Spring.....	2
7	915112	Nut 5/16-18.....	4
8	920082	Lockwasher 5/16.....	8
9	908017	Bolt 5/16-18 x 3/4.....	4
10	932008	Cotter Pin 3/32 x 3/4.....	2
11	104841	Spring.....	2
12	106449	Pin.....	2
13	106331	Rubber Cap.....	2
14	920008	Washer 5/16 SAE.....	4
15	908018	Bolt 5/16 - 18 x 7/8.....	4
16	518211	Grommet - Rear 208-3 Only.....	2
17	908018	Bolt 5/16-18 x 7/8.....	2
18	105503	Bushing.....	2
19	915112	Eslok Nut 5/16-18.....	4
20	105524	Pivot Bracket.....	2
21	915112	Eslok Nut 5/16-18.....	2
22	110920	Seat Pivot Plate.....	1
23	920008	Washer 5/16 SAE.....	4
24	908018	Bolt 5/16-18 x 7/8.....	4
25	920242	Bumper.....	1

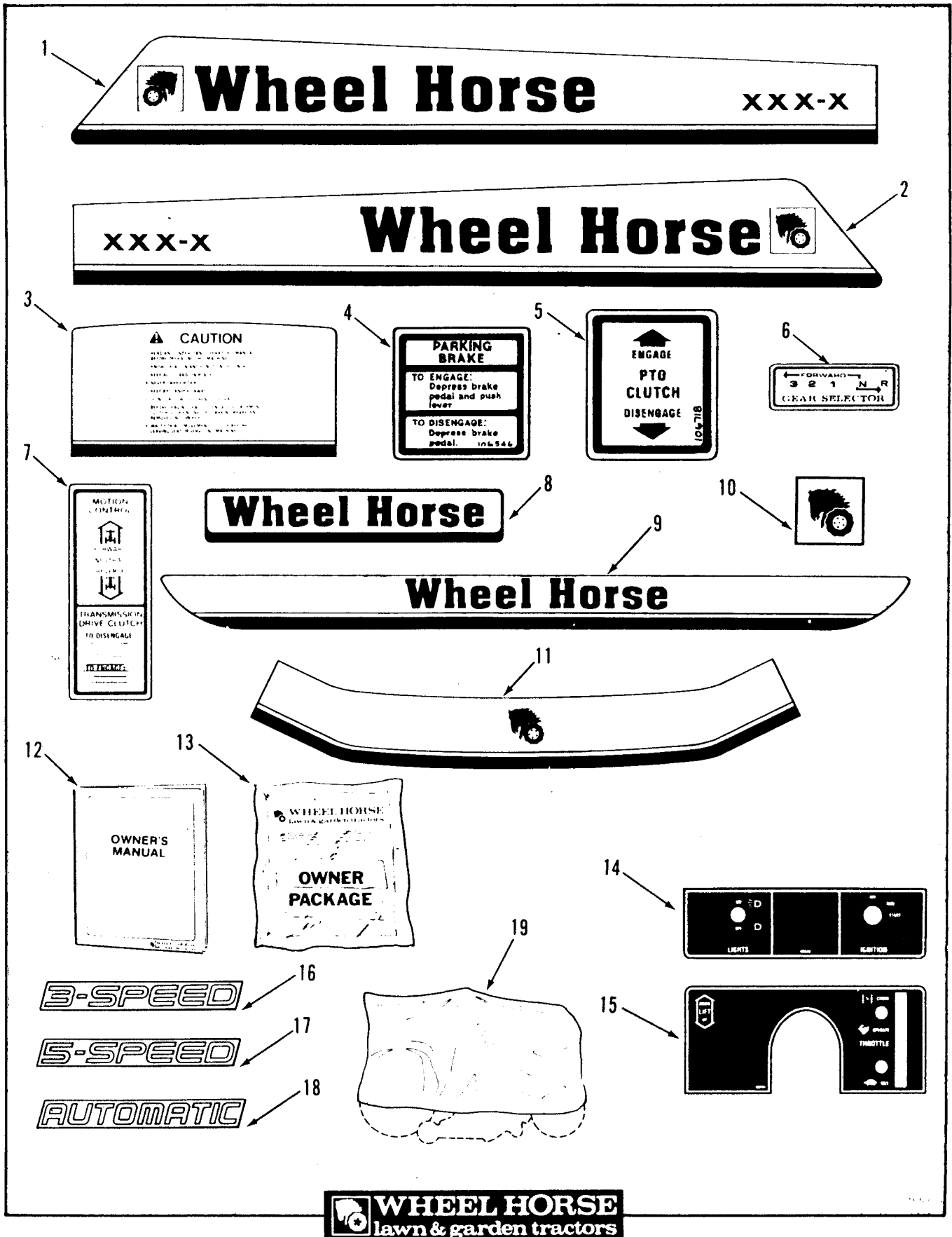
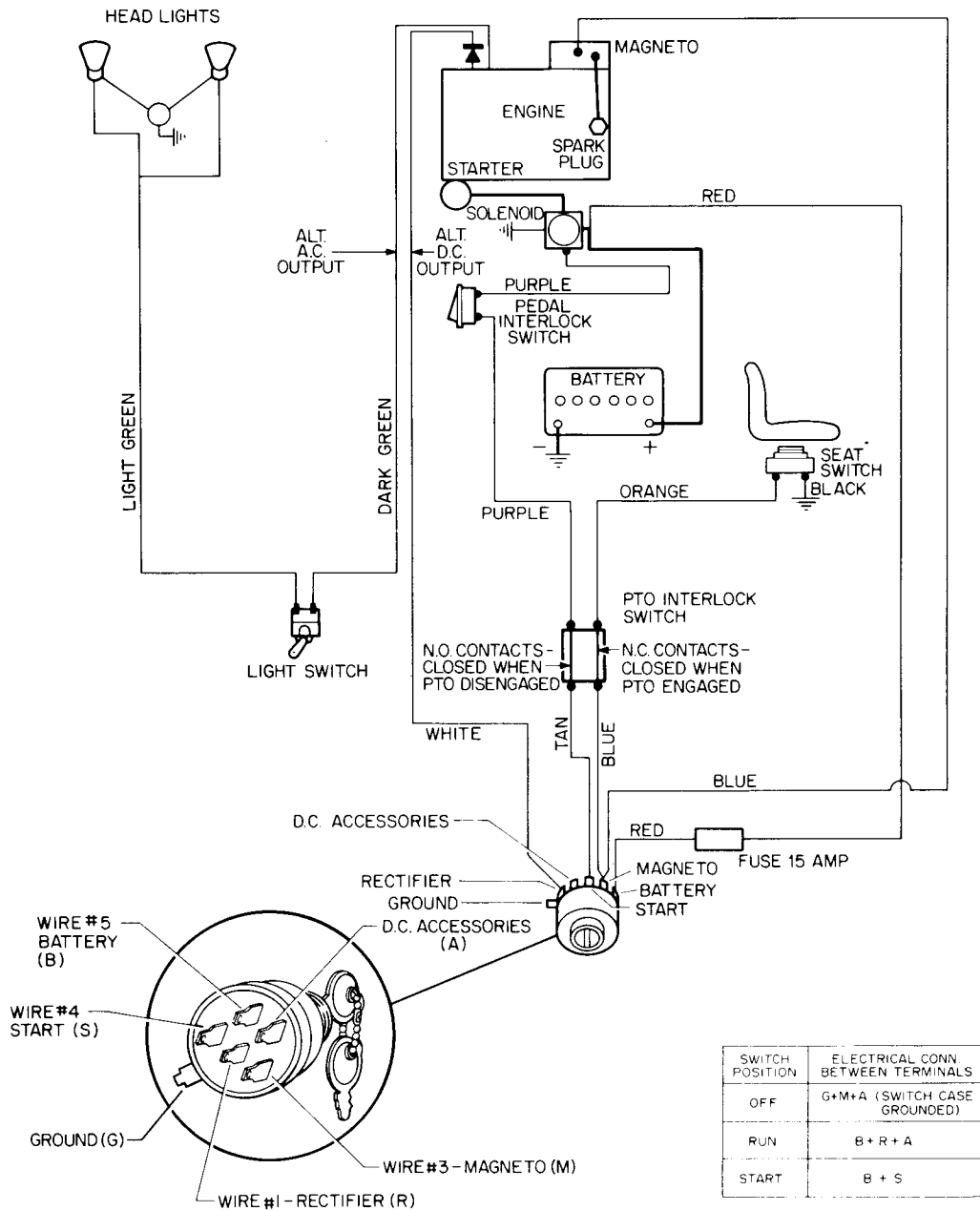


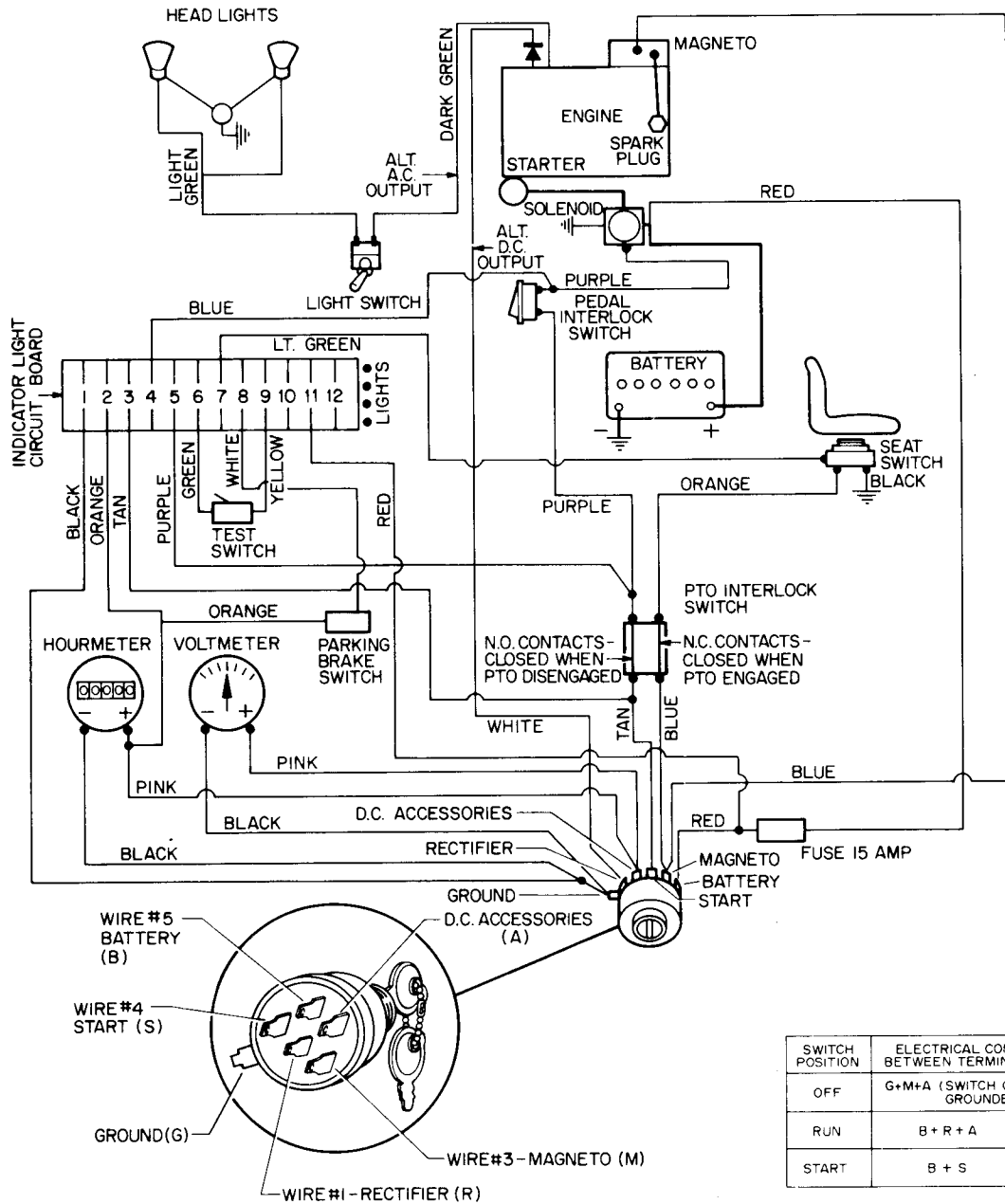
Figure 15-2 Decals, Miscellaneous

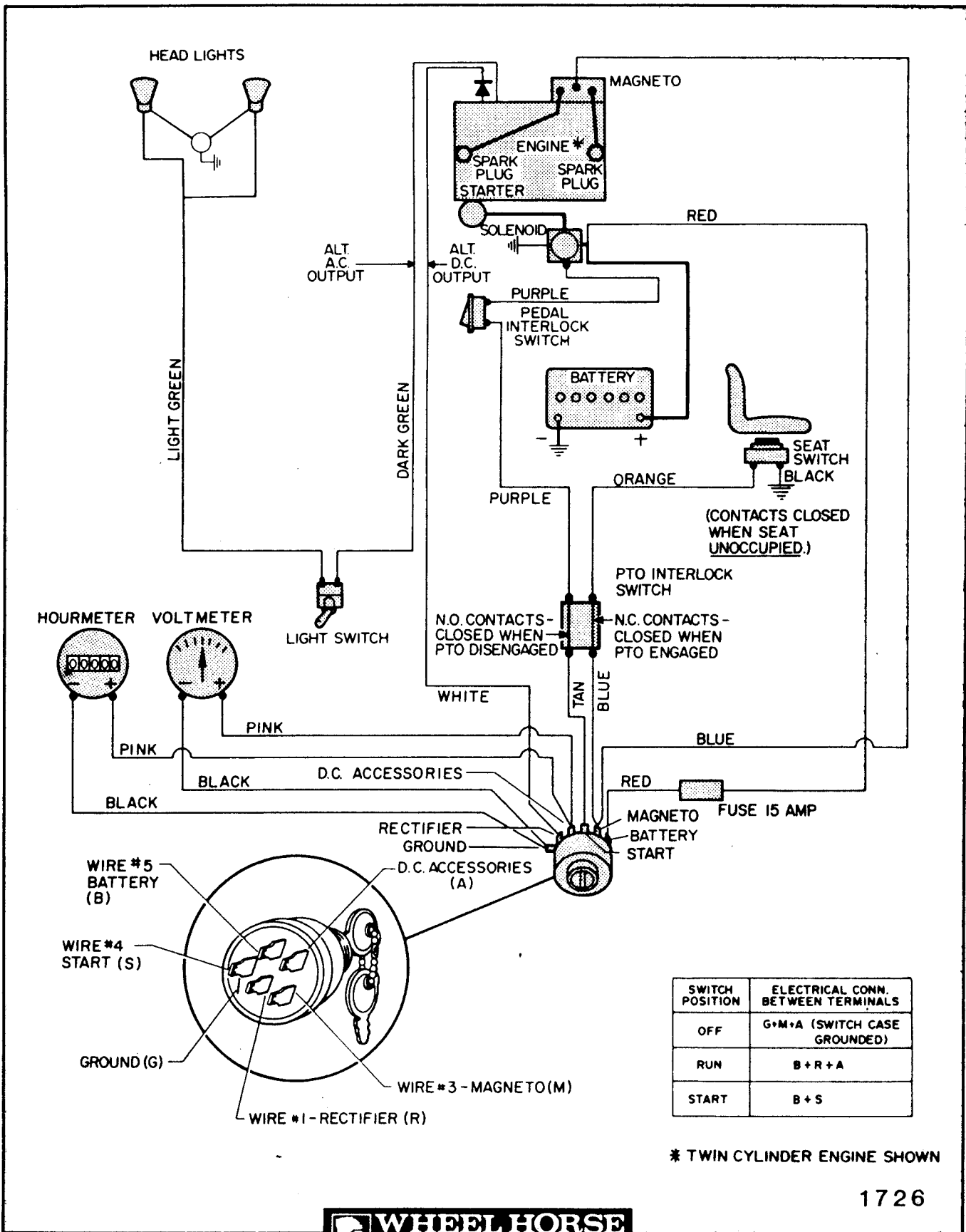
ITEM	PART NUMBER	DESCRIPTION	200-Series
Figure 15-2 DECALS, MISCELLANEOUS			
1	110628	Decal - Hood RH 208-3 Only.....	X
	110630	Decal - Hood RH 211-3 Only.....	X
	110822	Decal - Hood RH 211-5 Only.....	X
	110820	Decal - Hood RH 216-5 Only.....	X
	110832	Decal - Hood RH 211-A Only.....	X
2	110627	Decal - Hood LH 208-3 Only.....	X
	110631	Decal - Hood LH 211-3 Only.....	X
	110823	Decal - Hood LH 211-5 Only.....	X
	110821	Decal - Hood LH 216-5 Only.....	X
	110833	Decal - Hood LH 211-A Only.....	X
3	110509	Decal - Caution - Hood 208-3 Only.....	1
	110625	Decal - Caution - Hood 211-3, 211-5, 216-5, 211-A	1
4	106546	Decal - Parking Brake 208-3, 211-3, 211-5, 216-5.	1
	106603	Decal - Parking Brake 211-A Only.....	1
5	106718	Decal - PTO Clutch.....	1
6	110240	Decal - Shift 208-3, 211-3 Only.....	1
	108417	Decal - Shift 211-5, 216-5 Only.....	1
7	110850	Decal - Speed Control 211-A.....	1
8	110778	Decal - Rear Fender 208-3 Only.....	1
9	110629	Decal - Rear Fender 211-3, 211-5, 216-5, 211-A...	1
10	110777	Decal - Front Hood 208-3 Only.....	1
11	110626	Decal - Front Hood 211-3, 211-5, 216-5, 211-A....	1
12	810372R1	Owner's Manual-Tractor.....	X
13	807048	New Tractor Loose Parts Package 208-3 Only.....	X
	807049	New Tractor Loose Parts Package 211-3 Only.....	X
	807056	New Tractor Loose Parts Package 211-5 Only.....	X
	807057	New Tractor Loose Parts Package 216-5 Only.....	X
	807061	New Tractor Loose Parts Package 211-A Only.....	X
14	109522	Decal - Switch.....	1
15	109161	Decal - Dash 208-3, 211-3, 211-5, 211-A Only.....	1
15	109480	Decal - Dash 216-5 Only.....	1
16	110786	Decal - 3 Speed - 211-3 Only.....	1
17	110871	Decal - 5 Speed - 211-5, 216-5 Only.....	1
18	110738	Decal - Automatic - 211-A Only.....	1
19	110831	Vinyl Tractor Cover 216-5, 211-A Only.....	X

WIRING DIAGRAM – 208-3, 211-3 MODELS



WIRING DIAGRAM – 211-5, 211-6 MODELS





1726

Figure 17-1 Wiring Diagram

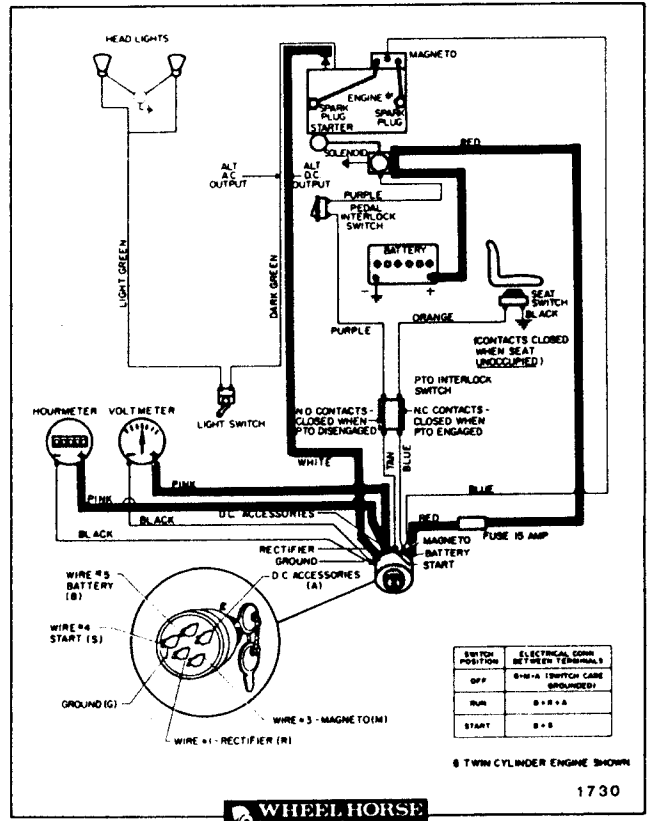
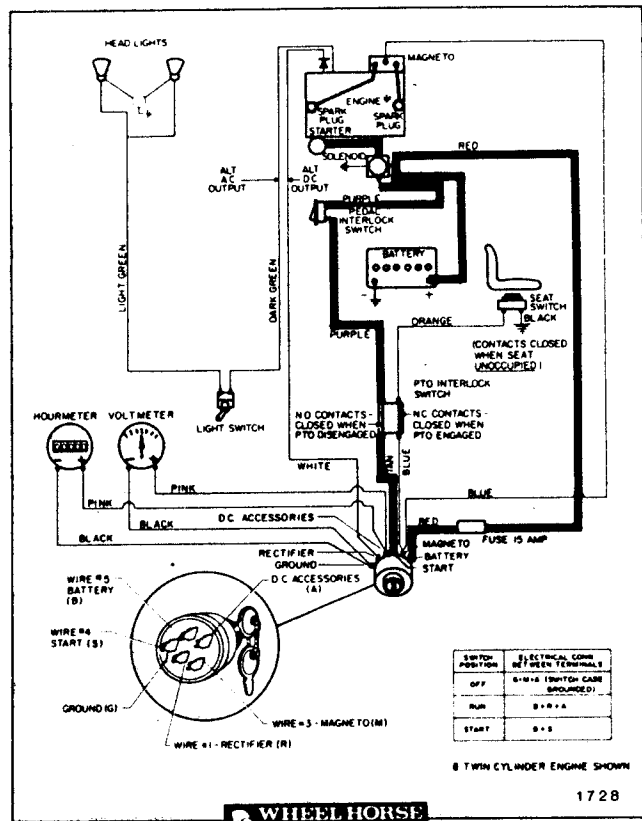
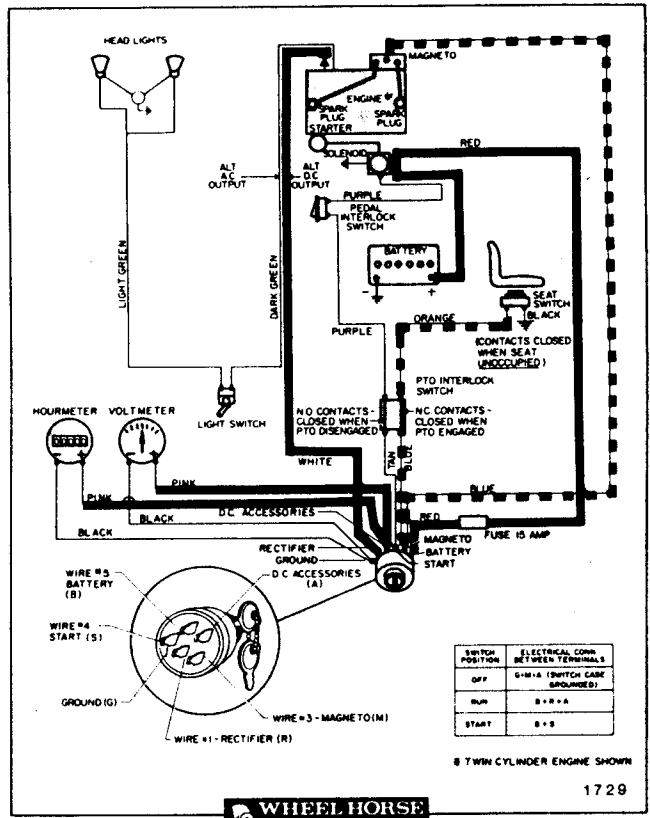
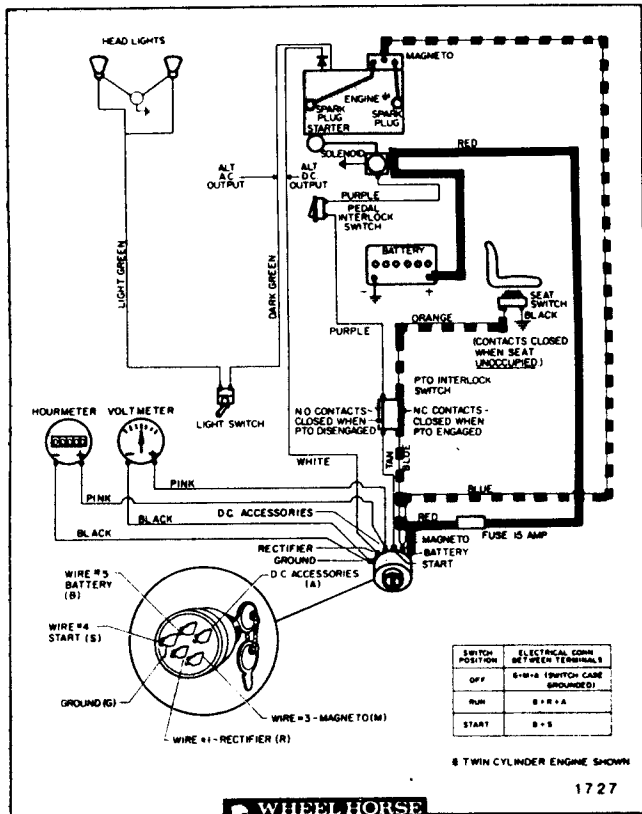
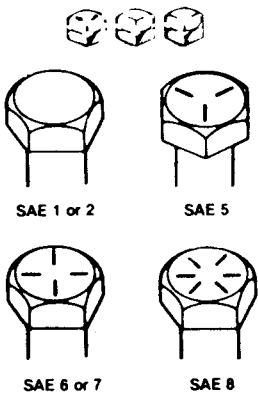


Figure 17-2 Wiring Diagram

TORQUE SPECIFICATIONS

BOLT HEAD MARKINGS	BOLT BODY SIZE In. - Thread	SAE GRADE 1 or 2		SAE GRADE 5		SAE GRADE 6 or 7		SAE GRADE 8	
		Torque		Torque		Torque		Torque	
		Ft-Lb	Nm	Ft-Lb	Nm	Ft-Lb	Nm	Ft-Lb	Nm
<p>Manufacturer's marks may vary. Three-line markings on heads shown below, for example, indicate SAE Grade 5.</p>  <p>SAE 1 or 2 SAE 5</p> <p>SAE 6 or 7 SAE 8</p>	1/4-20 -28	5 6	6.8 8.1	8 10	10.8 13.6	10	13.6	12 14	16.2 19.0
	5/16-18 -24	11 13	15.0 17.6	17 19	23.0 25.8	19	25.8	24 27	32.5 36.6
	3/8-16 -24	18 20	24.4 27.1	31 35	42.0 47.5	34	46.1	44 49	59.7 66.4
	7/16-14 -20	28 30	38.0 40.7	49 55	66.4 74.6	55	74.6	70 78	95.0 105.8
	1/2-13 -20	39 41	52.9 55.6	75 85	101.7 115.2	85	115.2	105 120	142.4 162.7
	9/16-12 -18	51 55	69.1 74.6	110 120	149.1 162.7	120	162.7	155 170	210.1 230.5
	5/8-11 -18	83 95	112.5 128.8	150 170	203.3 230.5	167	226.4	210 240	284.7 325.4
	3/4-10 -16	105 115	142.4 155.9	270 295	366.1 400.0	280	379.6	375 420	508.4 569.4
	7/8- 9 -14	160 175	216.9 237.3	395 435	535.5 589.8	440	596.6	605 675	820.3 915.2
	1- 8 -14	235 250	318.7 339.0	590 660	799.9 894.8	660	894.8	910 990	1233.8 1342.2

FASTENERS

- All hex bolts GRADE 5 minimum, GRADE 8 used as noted.
- All carriage bolts GRADE 1 unless otherwise noted.
- In place of ESLOK or E.S. nuts, use LOCTITE or lock washers with free running nuts.

PAINT

- Red Enamel — 6 cans, order #8-0311
- Red Enamel — Quart can #5340 (Non-aerosol) *
- Beige Enamel — 6 cans, order #8-0321
- Black Enamel — 6 cans, order #8-0334
- Pewter Metallic Enamel — 6 cans, order #8-0335
(Automotive Equivalent: 1971 Lincoln-Mercury Pewter Metallic)
- White Enamel — 6 cans, order #8-0336
- Pewter Gray Enamel — 6 cans, order #8-0337
(Automotive Equivalent: 1982 Lincoln Light Pewter)
- Silver Metallic Enamel — 6 cans, order #8-0338
- Pewter Gray Enamel — Quart can #5347 (Non-aerosol) **

- * Thinning — use zylol (slow drying time) or toluol (fast drying time)
- ** Thin with zylol

1 NUMERICAL INDEX

Part No.	Fig. No.	Part No.	Fig. No.	Part No.	Fig. No.	Part No.	Fig. No.
1014.....	14-3	8462.....	13-1	105306....	11-1	107750....	14-2
1030.....	5-1	8693.....	6-3	105316....	7-1	107772....	14-3
1030.....	13-1	8722.....	6-3	105450....	13-1	107788....	6-1
1085.....	5-1	8765.....	11-1	105451....	13-1	107788....	10-1
1120.....	13-1	MW8821....	6-1	105453....	14-1	107818....	14-3
1278.....	5-1	MW8821....	6-3	105453....	14-2	107825....	14-3
1278.....	13-1	8830.....	11-1	105490....	11-1	107970....	3-1
1481.....	5-1	9038.....	14-3	105503....	15-1	108011....	10-1
1772.....	5-1	9147.....	10-1	105504....	11-1	108130....	11-1
1773.....	5-1	9475.....	6-1	105524....	15-1	108177....	6-3
2534.....	6-2	100040....	13-1	105797....	8-1	108226....	5-1
2590.....	13-1	100043....	13-1	105805....	11-1	108227....	5-1
2844.....	6-1	100166....	13-1	105874....	14-2	108230....	5-1
2844.....	6-3	100171....	6-2	106055....	5-1	108243....	8-1
2844.....	8-2	100304....	6-2	106199....	5-1	108249....	8-2
3023.....	11-1	100305....	4-2	106202....	6-1	108279....	6-1
3624.....	7-1	100309....	4-2	106203....	6-1	108281....	11-1
5108.....	13-1	100365....	4-2	106288....	7-1	108326....	4-2
5210.....	5-1	100571....	11-1	106304....	6-1	108327....	4-2
5210.....	13-1	100656....	6-2	106310....	5-1	108333....	4-2
5224.....	9-1	101765....	6-1	106311....	5-1	108396....	3-1
5466.....	8-1	101765....	6-2	106331....	15-1	108397....	14-1
5700.....	13-1	101779....	13-1	106370....	11-1	108408....	14-1
5701.....	6-2	101884....	11-1	106382....	6-1	108408....	14-2
5712.....	13-2	102025....	6-1	106387....	14-1	108411....	14-3
5924.....	11-1	102025....	6-2	106369....	13-1	108417....	15-2
5943.....	5-1	102138....	11-1	106449....	15-1	108420....	3-1
5985.....	6-2	102651....	11-1	106450....	6-3	108421....	3-1
6129.....	6-2	102715....	5-1	106488....	8-2	108426....	14-2
6149.....	14-2	102809....	6-1	106546....	15-2	108427....	14-1
6264.....	6-2	102809....	6-2	106557....	8-2	108438....	15-1
6397.....	5-1	102856....	5-1	106563....	14-1	108457....	15-1
6533.....	6-1	102881....	11-1	106563....	14-2	108458....	8-1
6542.....	7-1	102950....	11-1	106564....	14-1	108459....	14-3
6663.....	14-1	103408....	6-1	106564....	14-2	108511....	6-1
6663.....	14-2	103480....	11-1	106565....	14-1	108552....	9-1
6739.....	6-1	103628....	6-1	106565....	14-2	108583....	9-1
6739.....	6-2	103628....	6-2	106573....	14-3	108602....	6-1
6820.....	6-1	103991....	11-1	106585....	6-1	108758....	3-1
6820.....	6-2	103995....	14-2	106585....	6-2	108790....	14-1
6949.....	6-2	104047....	10-1	106603....	15-2	108792....	3-1
7262.....	11-1	104048....	10-1	106661....	4-2	108793....	3-1
7602.....	6-1	104307....	13-1	106718....	15-2	108797....	6-1
7602.....	6-2	104525....	6-1	106769....	14-1	108807....	13-1
7721.....	14-3	104636....	13-1	106769....	14-2	108881....	4-2
7951.....	4-2	104822....	5-1	106825....	8-1	108898....	10-1
8130.....	7-1	104822....	7-1	106874....	4-1	108909....	5-1
8188.....	13-1	104841....	15-1	106950....	5-1	108910....	5-1
8191.....	13-1	104869....	3-1	107016....	15-1	108912....	15-1
8205.....	6-1	104885....	5-1	107069....	8-2	108917....	10-1
8205.....	14-2	104962....	11-1	107558....	4-1	108923....	6-1
8287.....	13-1	105259....	15-1	107748....	14-3	108984....	3-1
8462.....	13-1	105302....	11-1	107750....	14-1	108993....	9-1

Fig. Part No.	No.	Fig. Part No.	No.	Fig. Part No.	No.	Fig. Part No.	No.
108995	11-1	109401	6-2	110163	3-1	110711	13-1
109041	14-1	109402	4-1	110169	9-1	110723	11-1
109080	11-1	109407	6-2	110180	8-2	110738	15-2
109117	11-1	109413	6-2	110181	7-1	110741	11-1
109126	8-2	109414	14-2	110183	7-1	110743	5-1
109145	8-1	109417	6-2	110187	4-1	110771	10-1
109146	8-1	109423	6-2	110188	4-1	110772	10-1
109156	8-2	109425	8-2	110189	6-2	110773	10-1
109161	15-2	109427	14-2	110190	3-1	110774	10-1
109164	8-2	109429	14-2	110192	3-1	110775	10-1
109168	8-2	109432	6-3	110195	8-2	110776	10-1
109170	7-1	109435	6-3	110201	3-1	110777	15-2
109177	7-1	109437	6-3	110240	15-2	110778	15-2
109178	11-1	109444	6-3	110295	3-1	110783	13-1
109189	5-1	109445	11-1	110296	3-1	110785	13-1
109193	8-2	109446	4-2	110298	11-1	110786	15-2
109194	8-1	109447	4-2	110433	10-1	110796	3-1
109195	5-1	109451	8-2	110501	11-1	110797	3-1
109236	8-1	109457	8-2	110502	11-1	110798	3-1
109237	8-1	109459	11-1	110509	15-2	110801	8-2
109252	5-1	109472	9-1	110510	8-2	110802	8-2
109261	13-1	109480	15-2	110511	8-2	110809	9-1
109262	5-1	109483	10-1	110512	6-3	110810	10-1
109262	13-1	109489	6-1	110515	8-2	110811	10-1
109327	11-1	109492	3-1	110516	8-2	110813	13-1
109328	11-1	109504	13-1	110621	6-1	110815	13-1
109329	8-2	109512	9-1	110622	6-2	110816	13-1
109330	11-1	109522	15-2	110625	15-2	110817	13-1
109333	7-1	109529	5-1	110626	15-2	110818	13-1
109336	7-1	109530	10-1	110627	15-2	110819	13-1
109340	11-1	109544	9-1	110628	15-2	110820	15-2
109341	11-1	109547	11-1	110629	15-2	110821	15-2
109342	15-1	109553	11-1	110630	15-2	110822	15-2
109346	14-3	109605	11-1	110631	15-2	110823	15-2
109349	8-2	109606	6-2	110632	8-2	110831	15-2
109352	4-2	109646	11-1	110633	8-2	110832	15-2
109355	11-1	109650	11-1	110637	6-1	110833	15-2
109361	11-1	109731	14-1	110640	3-1	110850	15-2
109362	11-1	109733	5-1	110641	6-1	110853	11-1
109363	11-1	109798	14-2	110642	6-2	110871	15-2
109378	11-1	109832	14-3	110643	6-2	110908	13-1
109381	4-1	109842	14-3	110645	14-3	110920	15-1
109383	4-2	109910	11-1	110682	9-1	110927	3-1
109384	4-2	109960	10-1	110684	10-1	110970	11-1
109386	8-2	109961	10-1	110699	13-1	110971	11-1
109387	14-2	109983	11-1	110701	13-1	111047	3-1
109388	4-1	110056	9-1	110702	13-1	111048	3-1
109389	14-2	110129B	8-1	110703	13-1	111049	3-1
109390	4-1	110134	8-1	110705	13-1	111050	3-1
109393	4-1	110135	8-1	110706	13-1	111051	3-1
109394	4-1	110151	3-1	110709	13-1	111084	14-3
109399	6-1	110152	3-1	110710	13-1	111089	7-1

3 NUMERICAL INDEX

Part No.	Fig. No.	Part No.	Fig. No.	Part No.	Fig. No.	Part No.	Fig. No.
111110....	5-1	908025....	3-1	915662....	8-2	920261....	6-2
111111....	5-1	908032....	6-3	915663....	6-2	920261....	14-2
111112....	5-1	908034....	4-1	915740....	10-1	920262....	11-1
111113....	5-1	908034....	5-1	920007....	3-1	923784....	8-1
219019....	4-1	908034....	6-3	920007....	6-2	923785....	8-1
518017....	10-1	908035....	5-1	920007....	8-1	926671....	8-2
518017....	11-1	908035....	6-2	920007....	8-2	926671....	11-1
518074....	11-1	908038....	3-1	920007....	11-1	926673....	3-1
518077....	11-1	908038....	6-1	920008....	3-1	926694....	8-1
518151....	11-1	908038....	6-2	920008....	4-1	926694....	8-2
518211....	8-2	908039....	6-1	920008....	6-1	926697....	3-1
518211....	15-1	908042....	4-2	920008....	6-2	926720....	3-1
518246....	11-1	908195....	14-1	920008....	8-2	932008....	6-2
519337....	11-1	908195....	14-2	920008....	9-1	932008....	14-3
807048....	15-2	909540....	14-1	920008....	14-1	932008....	15-1
807049....	15-2	909848....	5-1	920008....	15-1	932016....	6-1
807056....	15-2	910792....	10-1	920009....	4-2	932016....	6-3
807057....	15-2	910808....	8-2	920009....	6-1	932016....	14-3
807061....	15-2	910837....	8-2	920009....	6-2	932017....	5-1
810283R1..	4-2	911424....	5-1	920009....	6-3	932017....	7-1
810372R1..	15-2	911684....	9-1	920009....	14-2	932025....	6-1
900015....	8-1	911747....	6-3	920011....	7-1	932025....	6-2
900036....	8-2	915002....	5-1	920011....	14-2	932026....	5-1
900037....	3-1	915083....	6-2	920038....	6-1	932026....	13-1
900037....	4-1	915111....	6-2	920038....	6-2	932035....	5-1
900037....	6-3	915111....	8-1	920039....	6-1	933148....	7-1
900037....	7-1	915111....	8-2	920039....	7-1	933198....	14-3
900037....	8-2	915111....	11-1	920079....	8-2	933221....	5-1
900037....	14-3	915112....	3-1	920081....	3-1	936032....	14-3
900038....	4-1	915113....	4-1	920081....	11-1	936122....	4-2
900038....	7-1	915112....	6-1	920082....	3-1	936125....	14-3
900038....	8-1	915112....	6-2	920082....	14-1	937082....	4-2
900041....	6-1	915112....	6-3	920082....	15-1	937082....	14-2
900041....	6-2	915112....	7-1	920083....	4-1	937225....	14-1
900062....	7-1	915112....	8-1	920083....	4-2	938018....	11-1
900064....	6-1	915112....	8-2	920083....	6-3	938052....	8-1
900065....	14-2	915112....	9-1	920155....	6-1	960151....	11-1
900066....	6-1	915112....	11-1	920155....	11-1		
900233....	6-2	915112....	14-1	920160....	11-1		
908001....	9-1	915112....	14-3	920215....	6-1		
908003....	11-1	915112....	15-1	920215....	6-2		
908005....	14-2	915113....	3-1	920219....	5-1		
908007....	6-2	915113....	4-2	920239....	13-1		
908015....	8-2	915113....	5-1	920242....	5-1		
908016....	8-2	915113....	6-1	920242....	15-1		
908016....	11-1	915113....	6-2	920249....	6-1		
908016....	14-3	915113....	6-3	920251....	13-1		
908017....	7-1	915113....	7-1	920252....	13-1		
908017....	8-2	915234....	11-1	920259....	11-1		
908017....	15-1	915235....	14-3	920259....	14-3		
908018....	15-1	915236....	5-1	920261....	6-1		
908019....	4-2	915551....	8-2				

Product information and specifications are shown herein as of the time of printing. Wheel Horse Products, Inc. reserves the right to change product specifications, designs and standard equipment without notice and without incurring obligation.



WHEEL HORSE
lawn & garden tractors